

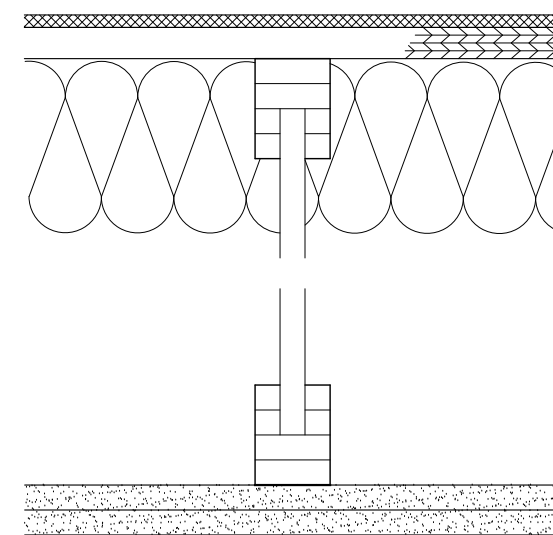
System Performance
1 HR Fire
Similar to
UL Design No. U305 or U314
BNN-700725

System Description
Wood Stud Partition (Loadbearing)

- 5/8" SHEETROCK Brand FIRECODE Core Gypsum Pane, SHEETROCK Brand FIRECODE Core Gypsum Panel Mold Tough, FIBEROCK Brand Panel or IMPERIAL Brand FIRECODE Core Gypsum Base
- 2x6 stud min. 24" o.c. (see floor plans)
- 3" min. mineral wool batt (see floor plans)
- 5/8" SHEETROCK Brand FIRECODE Core Gypsum Panel

1-HR FIRE RATED WALL DETAIL, TYPICAL

NOT TO SCALE



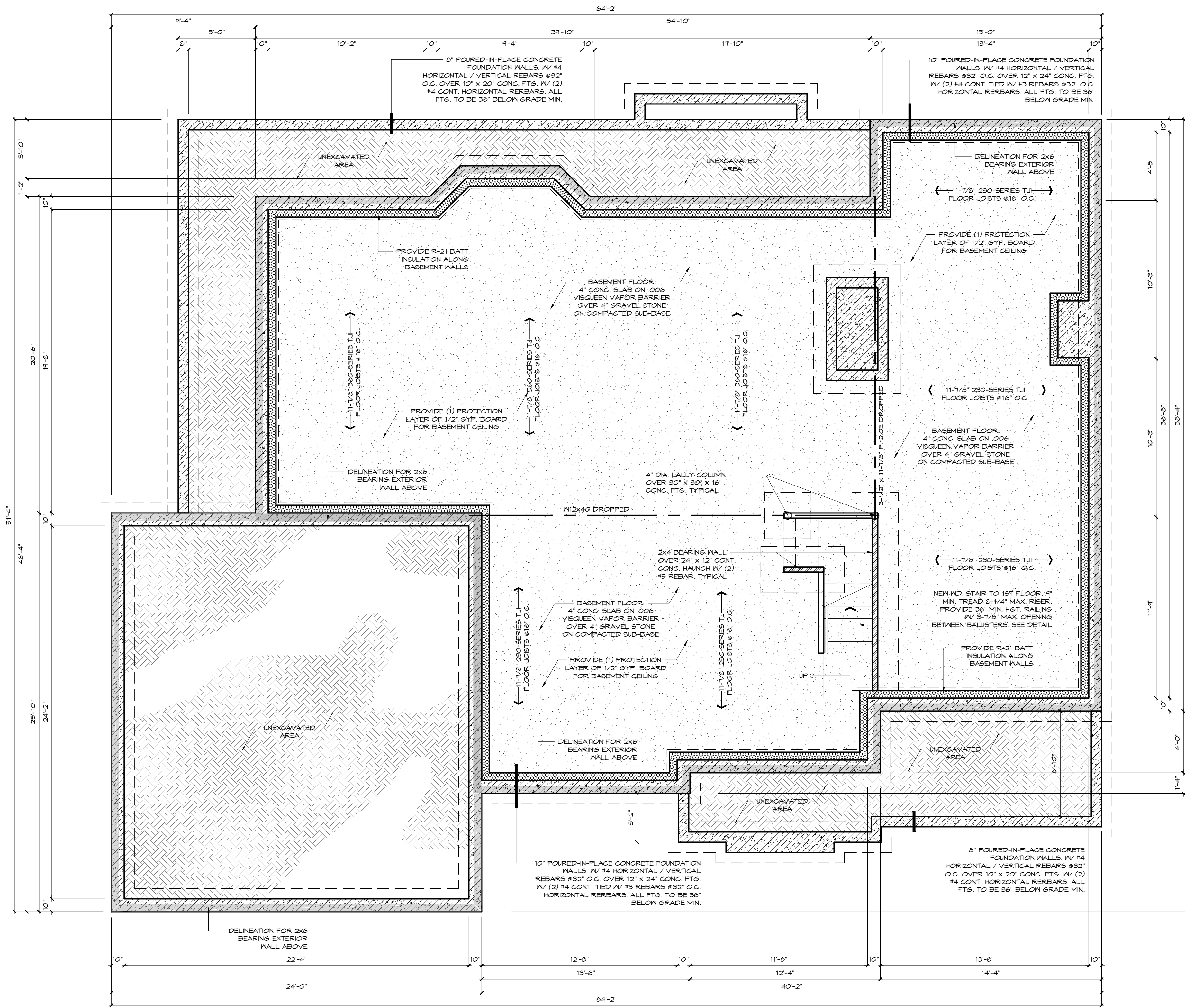
SYSTEM PERFORMANCE
1 HR FIRE
SIMILAR TO:
UL DESIGN NO. L570

SYSTEM DESCRIPTION
ENGINEERED JOIST

- SPEC. FLOOR FINISH
- 3/4" LEVELROCK BRAND FLOOR UNDERLAYMENT
- SRB SOUND MAT
- 9-1/2" MIN. TJI JOIST MAX 24" O.C.
- SPEC. MINERAL WOOL BATT
- TWO LAYERS 1/2" SHEETROCK BRAND FIRECODE C CORE GYPSUM PANELS

1-HR FIRE RATED CEILING DETAIL, TYPICAL

NOT TO SCALE



BASEMENT FLOOR PLAN

SCALE: 1/4" = 1'-0"

LEGEND	
	TYPICAL EXTERIOR/INTERIOR PARTITION: SPEC. STUDS @ 16" O.C. IV GYP. BOARD FINISH (SEE PLANS TO SPEC. TYPE/LOCATION)
	1-HOUR FIRE RATED PARTITION: 2x6 STUDS @ 16" O.C. IV 5/8" TYPE X GYPSUM BOARD EACH SIDE (SEE DETAIL)
	CAST-IN-PLACE CONCRETE WALL, SEE FOUNDATION PLAN
	NEW DOOR, SEE PLANS FOR INDIVIDUAL SIZES

ELECTRICAL LEGEND	
	3-WAY SWITCH
	SINGLE-POLE SWITCH
	DIMMER SWITCH
	GROUND FAULT
	WATERPROOF DUPLEX OUTLET
	TOP SWITCH OUTLET
	QUADRUPLUX OUTLET
	INCANDESCENT LIGHTING (SURFACE MOUNTED)
	SCONCE (WALL MOUNTED)
	RECESSED LIGHTING
	SMOKE DETECTOR 110V A/G INTERCONNECTED
	COMBINATION CARBON MONOXIDE / SMOKE DETECTOR 110V A/G INTERCONNECTED
	FLOOR / CEILING MOUNTED OUTLET
	FAN/LIGHT COMBINATION 50 CFM VENT TO EXTERIOR

EVANS ARCHITECTS AIA

MATTHEW G. EVANS
ARCHITECT - PROFESSIONAL PLANNER

470 CHAMBERLAIN AVENUE
PATERSON NEW JERSEY 07652
973 942-9020
MATT@EVANSARCHITECTS.COM
WWW.EVANSARCHITECTS.COM

PROPOSED NEW ONE FAMILY RESIDENCE FOR 540 HELENA AVE BLOCK 314, LOT 72 WYCKOFF, NJ

THIS DOCUMENT AND THE IDEAS AND DESIGNS INCORPORATED HEREIN AS AN INSTRUMENT OF PROFESSIONAL SERVICE, IS THE PROPERTY OF EVANS ARCHITECTS AND IS NOT TO BE USED IN WHOLE OR IN PART, FOR ANY OTHER PROJECT WITHOUT THE WRITTEN AUTHORIZATION OF EVANS ARCHITECTS. ALL RIGHTS RESERVED © 2020 EVANS ARCHITECT

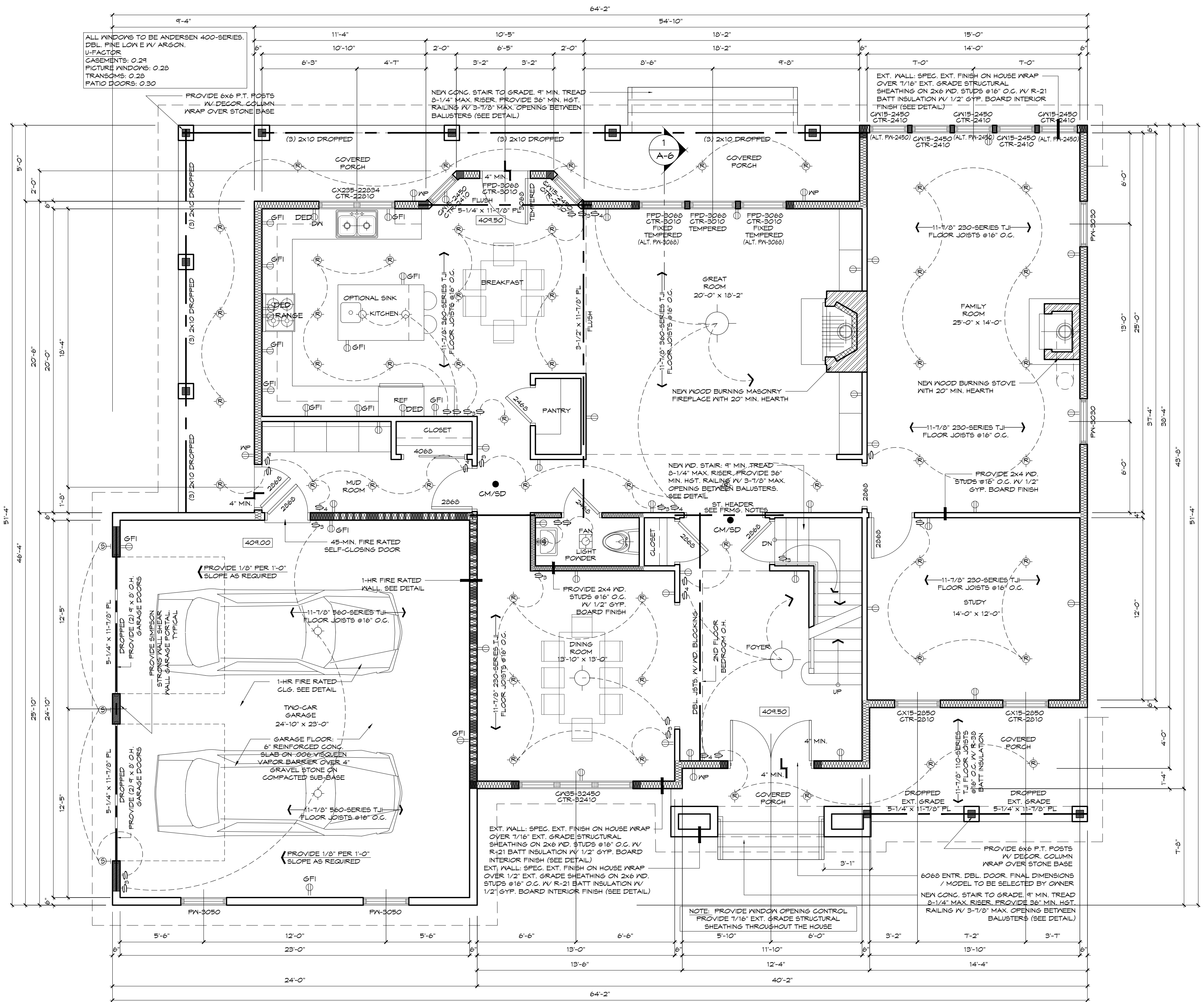
DRW BY	DATE	REV	COMMENT
D.K.	11.18.20		PRELIMINARY DRAWINGS
D.K.	11.23.20		CUSTOMER REVIEW
D.K.	12.16.20		CUSTOMER REVIEW
D.K.	02.17.21		CONSTRUCTION DRAWINGS
D.K.	04.02.21		ARCHITECT REVIEW

BASEMENT FLOOR PLAN

MATTHEW G. EVANS
ARCHITECT • PLANNER

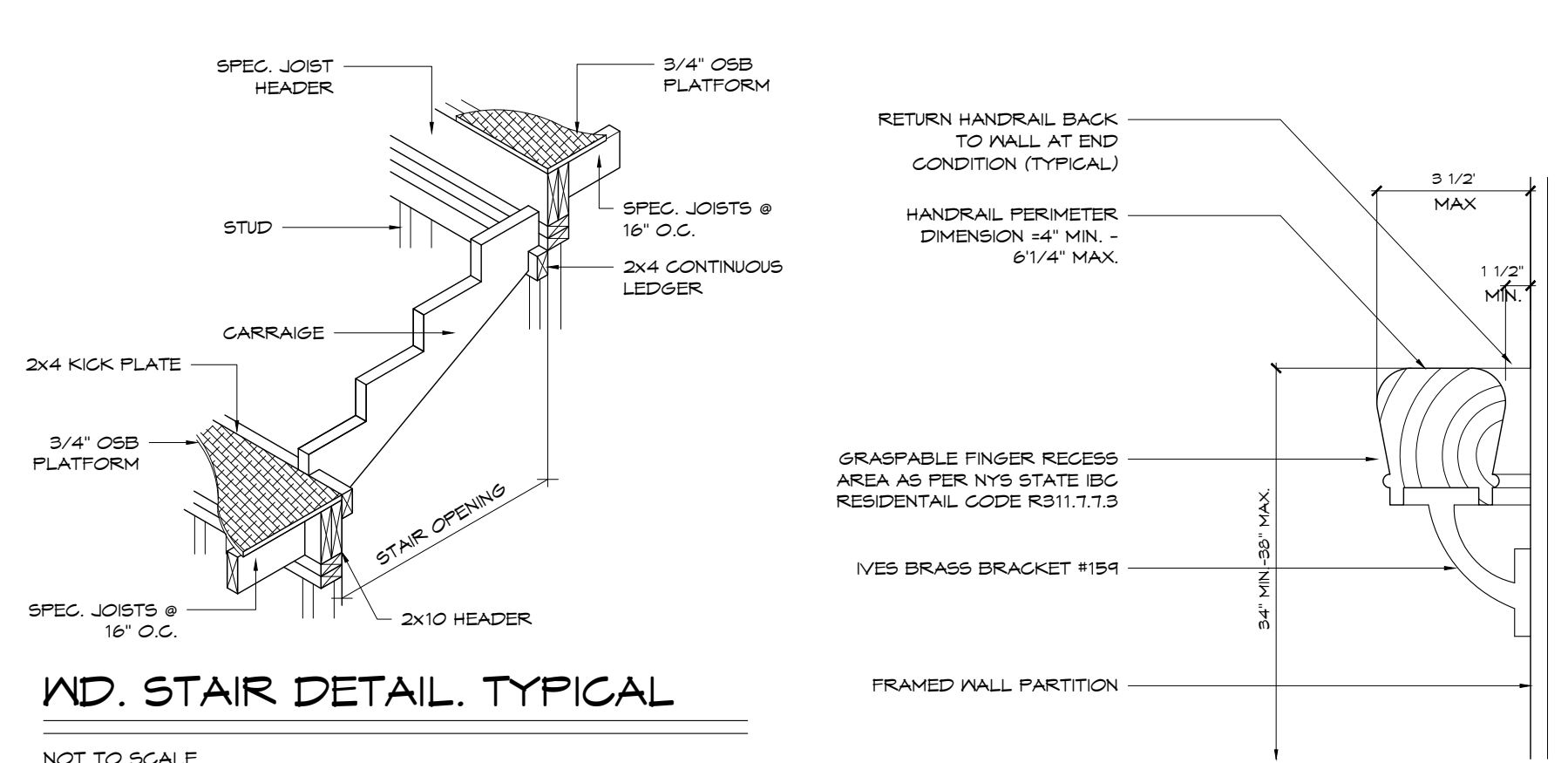
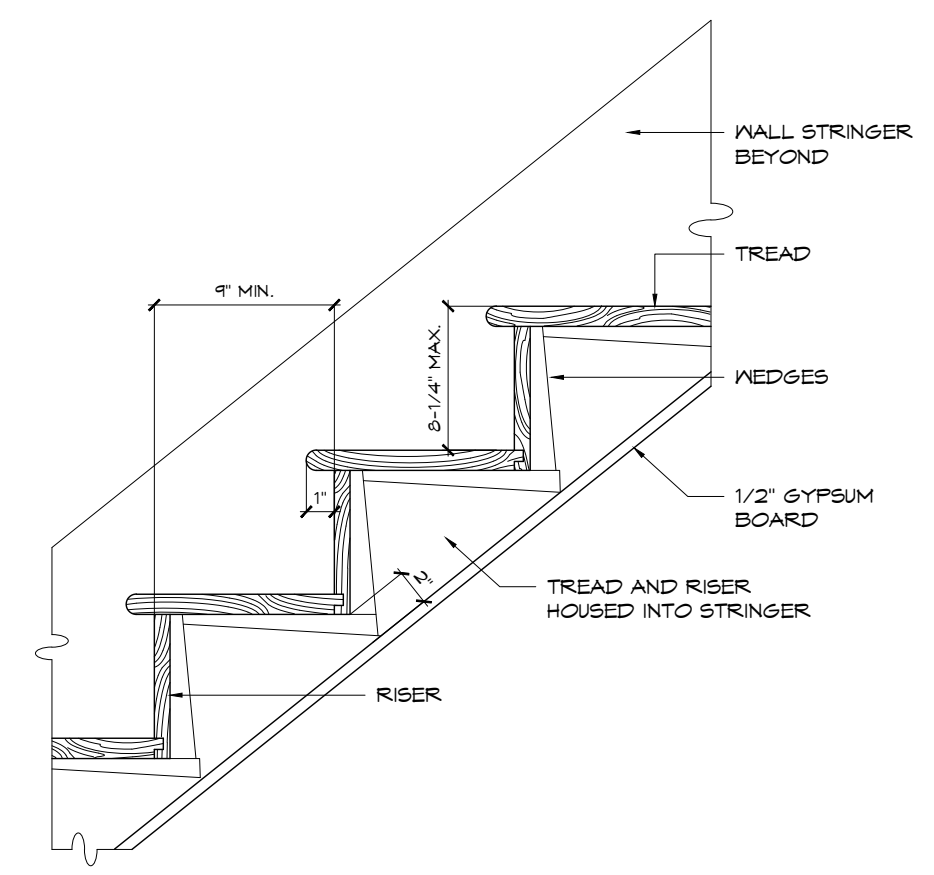
SHEET NUMBER
A-1

R.A. LIC. NO. 13803
P.P. LIC. NO. 5662



PROPOSED 1ST FLOOR PLAN

SCALE: 1/4" = 1'-0"



- NOTES
- 1 ALL INTERIOR FINISHES ARE TO BE CHOSEN BY THE OWNER.
 - 2 THE MIN. HEADROOM IN ALL PARTS OF A STAIRWAY SHALL NOT BE LESS THAN 6'-8" MEASURED VERTICALLY FROM THE TREAD NOSING OR FROM THE FLOOR SURFACE OF THE LANDING OR PLATFORM. STAIR TREAD MIN. 10". STAIR RISER MAX. 8-1/4".
 - 3 VERIFY CLEARANCES AND DIMENSIONS WITH MANUFACTURER.
 - 4 ANY AND ALL REVISIONS TO THE STAIR STRUCTURE MUST BE APPROVED BY THE ARCHITECT.
 - 5 ALL WOOD TO BE DOUGLAS FIR LARCH NO. 2 WITH:
 - F = 2500 PSI (SINGLE)
 - F = 1450 PSI (REPET)
 - F = 95 PSI (SHEAR)
 - F = 1050 PSI (COMP.)
 - E = 1,100,000 PSI
 - 6 ALL LINTELS ARE TO HAVE 1/2" PLYWOOD FILLER (TYPICAL - ALL WINDOWS & DOORS - ENTIRE BUILDING)
 - 7 ALL CONNECTIONS TO BE MADE WITH MECHANICAL FASTENERS BY SIMPSON OR APPROVED EQUAL.

LEGEND

	TYPICAL EXTERIOR/INTERIOR PARTITION: SPEC. STUDS @ 16" O.C. W/ 5/8" GYP. BOARD FINISH (SEE PLANS TO SPEC. TYPE/LOCATION)
	1-HOUR FIRE RATED PARTITION: 2x6 STUDS @ 16" O.C. W/ 5/8" TYPE X GYPSUM BOARD EACH SIDE (SEE DETAIL)
	CAST-IN-PLACE CONCRETE WALL, SEE FOUNDATION PLAN
	NEW DOOR: SEE PLANS FOR INDIVIDUAL SIZES

ELECTRICAL LEGEND

	3-WAY SWITCH
	SINGLE-POLE SWITCH
	DIMMER SWITCH
	GROUND FAULT
	WATERPROOF DUPLEX OUTLET
	TOP SWITCH OUTLET
	QUADPLEX OUTLET
	INCANDESCENT LIGHTING (SURFACE MOUNTED)
	SCONCE (WALL MOUNTED)
	RECESSED LIGHTING
	SMOKE DETECTOR 110V A/C INTERCONNECTED
	COMBINATION CARBON MONOXIDE / SMOKE DETECTOR 110V A/C INTERCONNECTED
	FLOOR / CEILING MOUNTED OUTLET
	FAN / LIGHT COMBINATION 50 CFM VENT TO EXTERIOR

EVANS ARCHITECTS AIA

MATTHEW G. EVANS
ARCHITECT - PROFESSIONAL PLANNER

470 CHAMBERLAIN AVENUE
PATERSON NEW JERSEY 07652
973 942-9020
MATT@EVANSARCHITECTS.COM
WWW.EVANSARCHITECTS.COM

PROPOSED NEW ONE FAMILY RESIDENCE FOR 540 HELENA AVE BLOCK 314, LOT 72 WYCKOFF, NJ

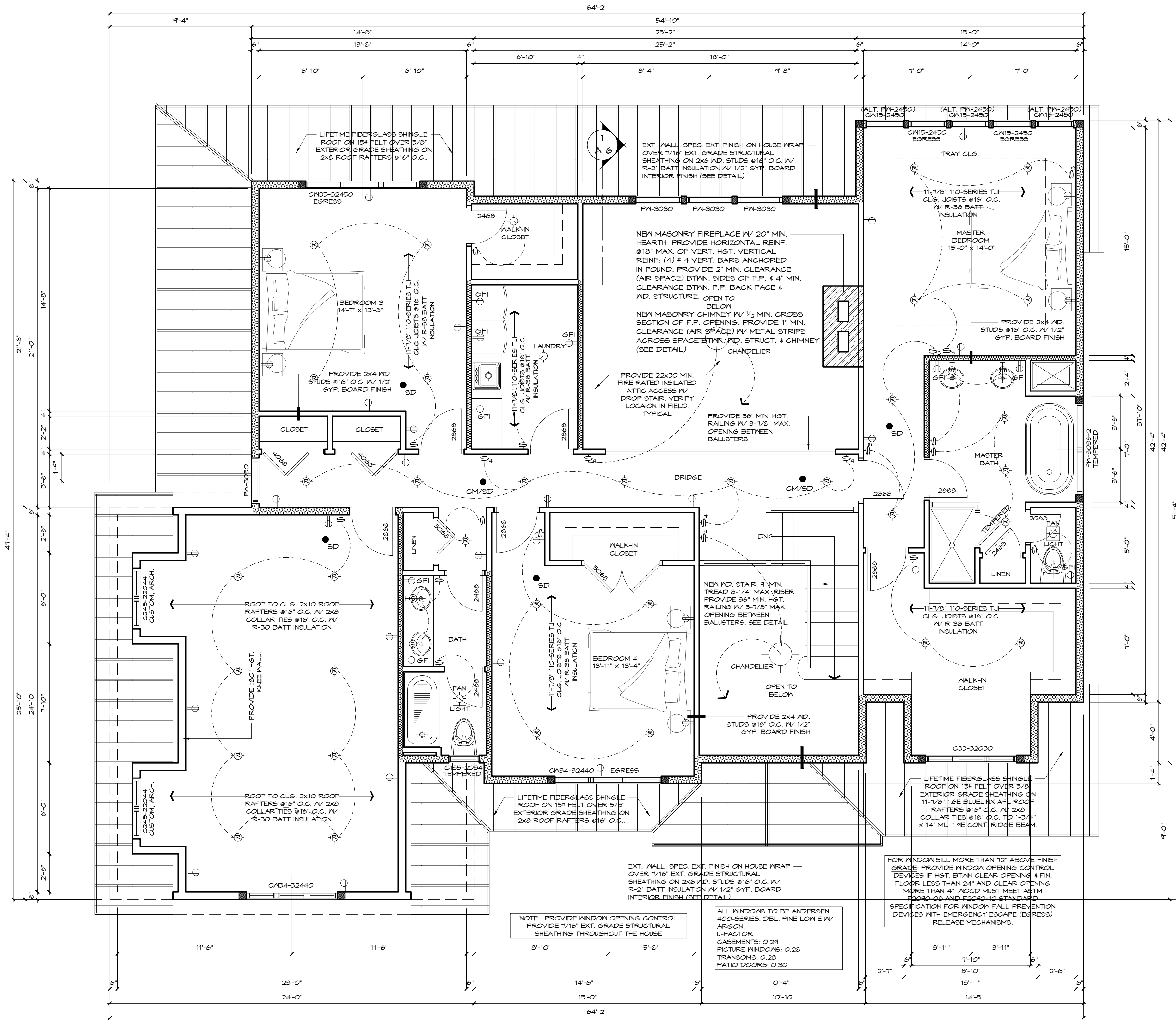
THIS DOCUMENT, AND THE IDEAS AND DESIGNS INCORPORATED HEREIN AS AN INSTRUMENT OF PROFESSIONAL SERVICE, IS THE PROPERTY OF EVANS ARCHITECTS AND IS NOT TO BE USED IN WHOLE OR IN PART, FOR ANY OTHER PROJECT, WITHOUT THE WRITTEN AUTHORIZATION OF EVANS ARCHITECTS. ALL RIGHTS RESERVED © 2020 EVANS ARCHITECT

DRW BY	DATE	REV	COMMENT
D.K.	11.18.20		PRELIMINARY DRAWINGS
D.K.	11.23.20		CUSTOMER REVIEW
D.K.	12.16.20		CUSTOMER REVIEW
D.K.	02.17.21		CONSTRUCTION DRAWINGS
D.K.	04.02.21		ARCHITECT REVIEW

PROPOSED 1ST FLOOR PLAN

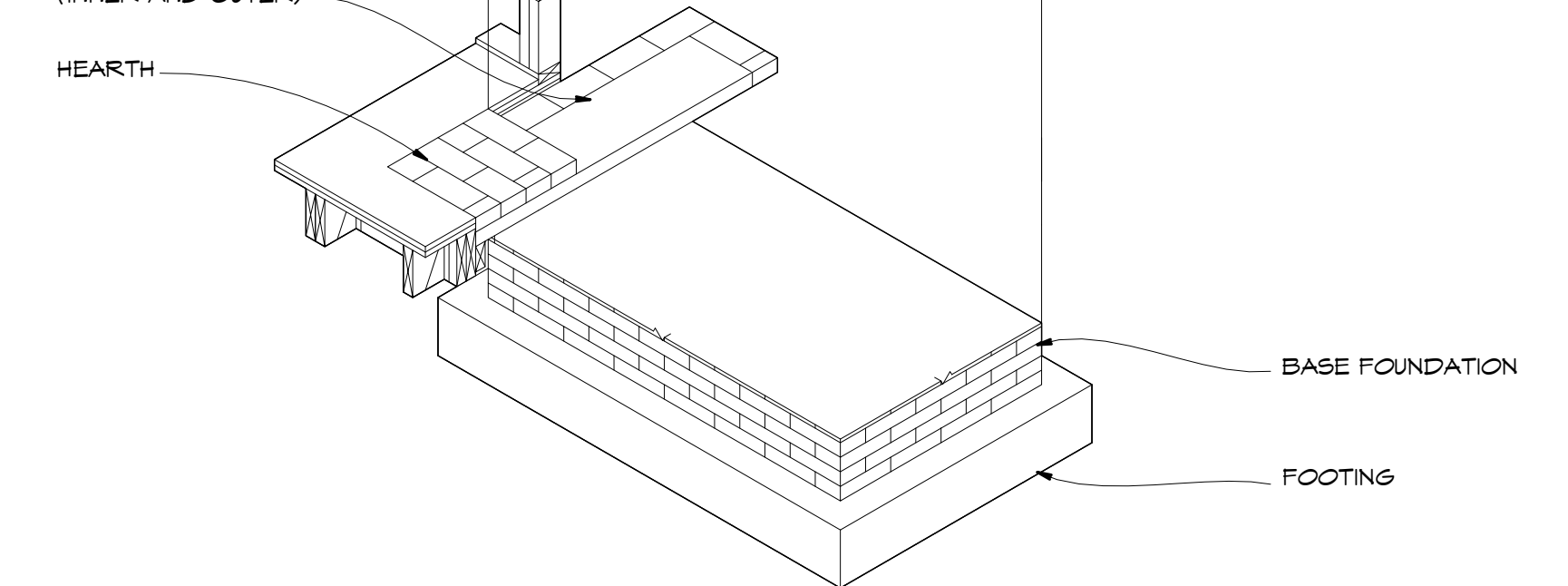
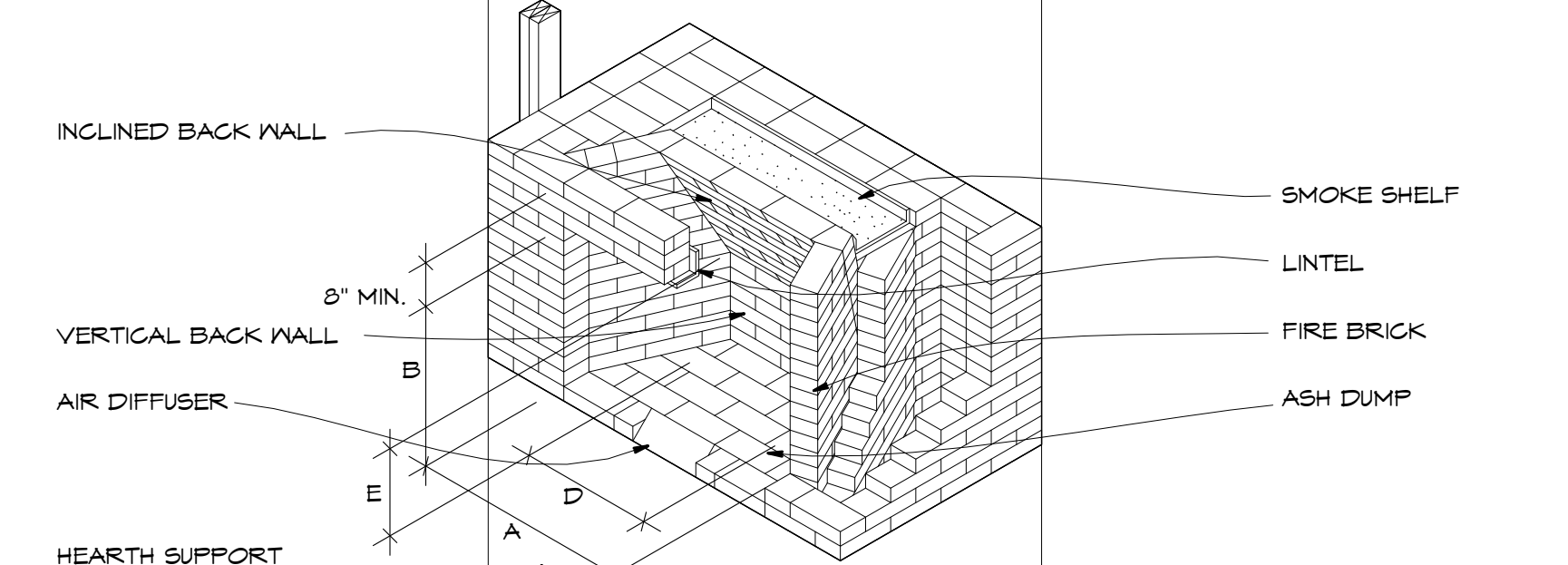
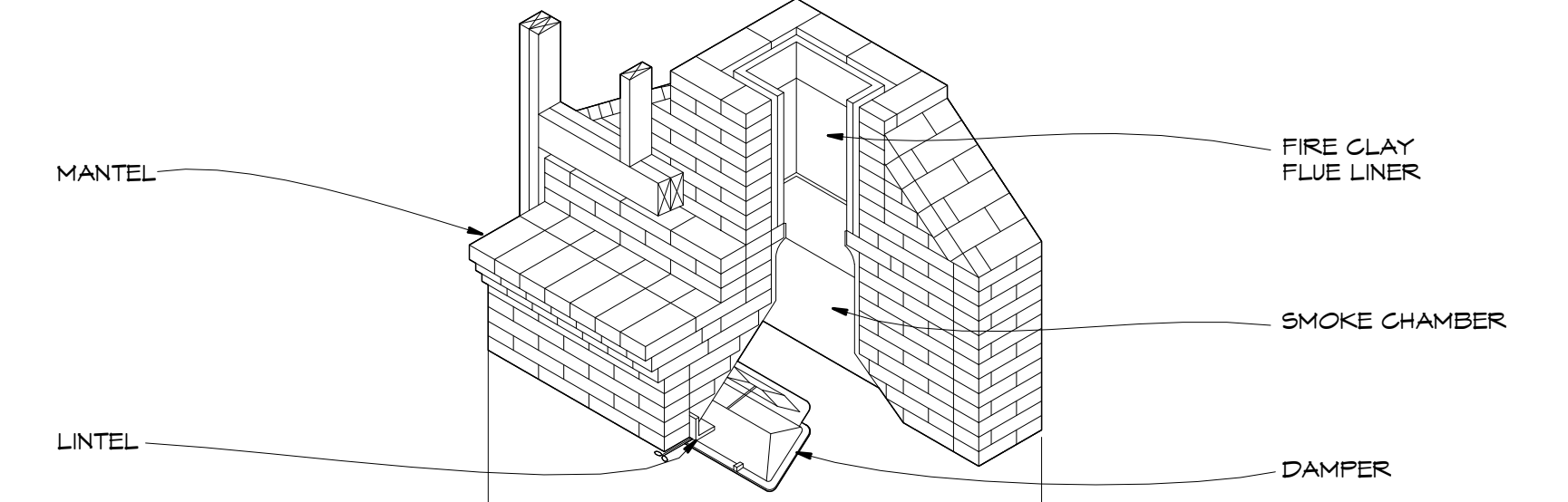
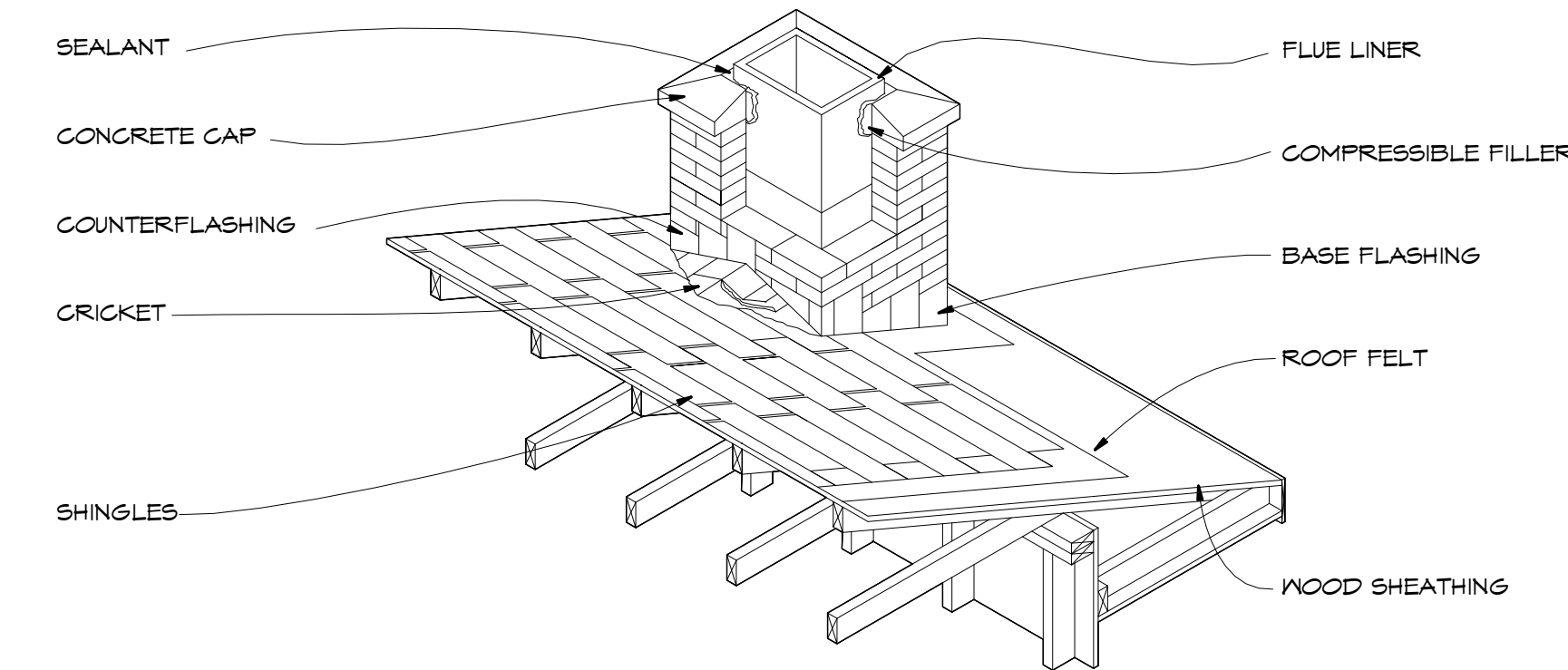
MATTHEW G. EVANS ARCHITECT - PLANNER	SHEET NUMBER A-2
-----------------------------------------	----------------------------

R.A. LIC. NO. 13803
P.P. LIC. NO. 5662



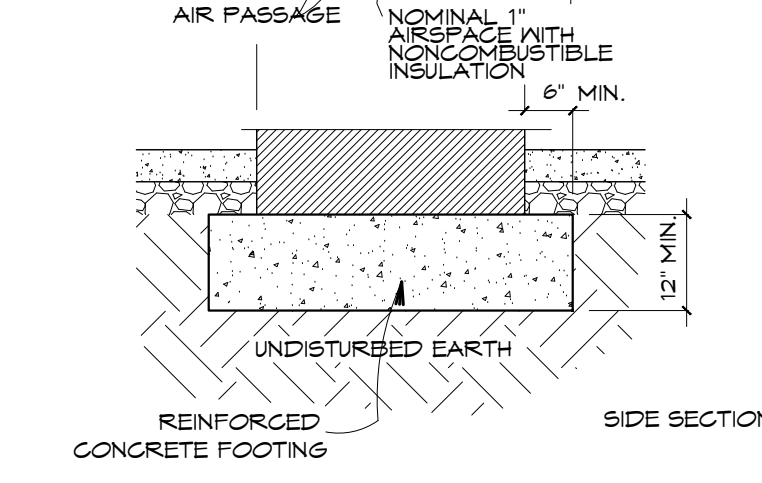
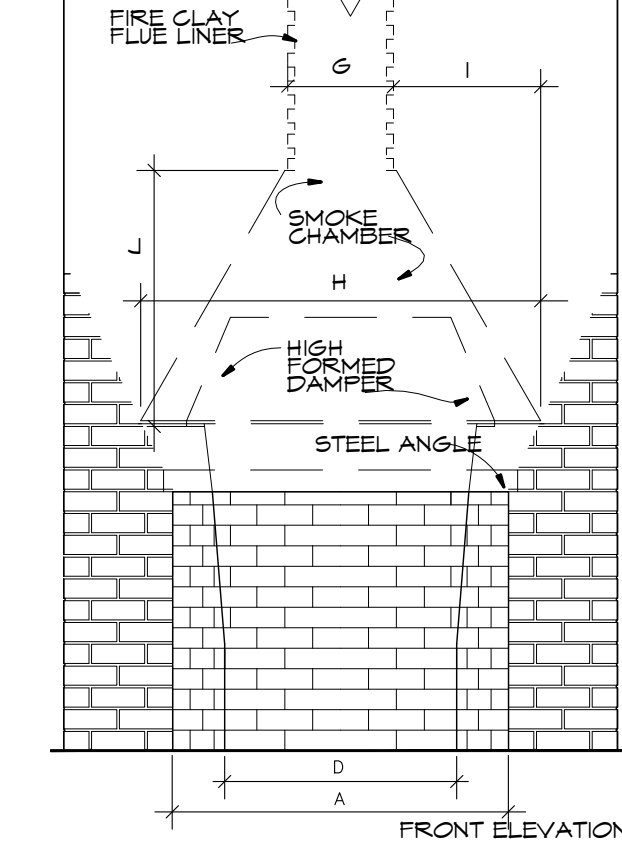
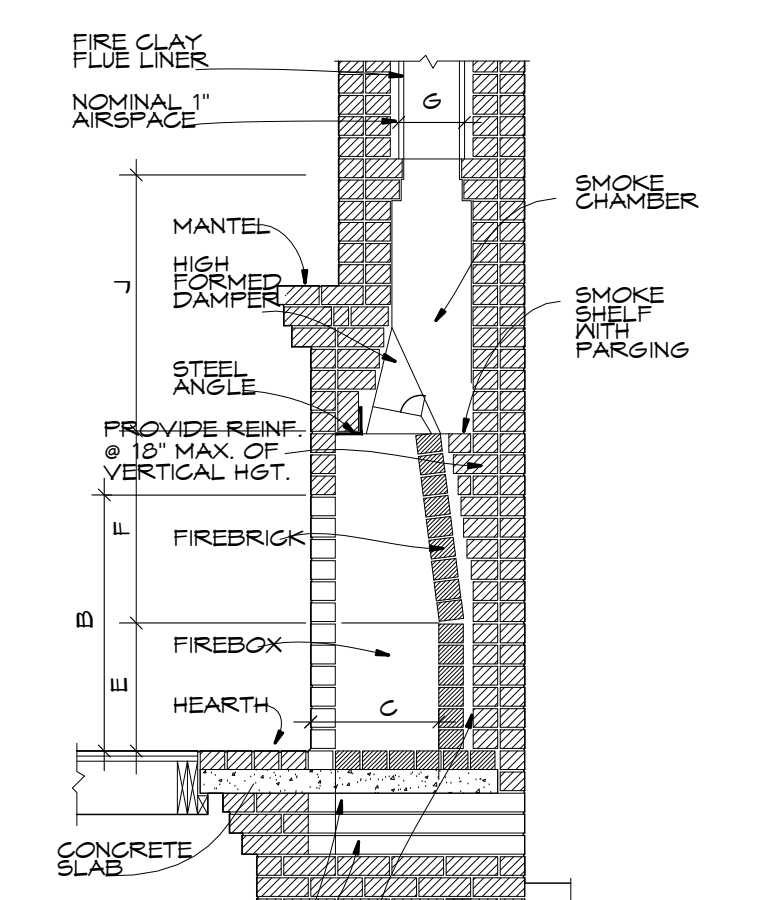
PROPOSED 2ND FLOOR PLAN

SCALE: 1/4" = 1'-0"



WOOD-BURNING FIREPLACE TYPICAL DETAILS

NOT TO SCALE



EVANS ARCHITECTS AIA
MATTHEW G. EVANS
 ARCHITECT - PROFESSIONAL PLANNER
 470 CHAMBERLAIN AVENUE
 PATERSON NEW JERSEY 07652
 973 942-9020
 MATT@EVANSARCHITECTS.COM
 WWW.EVANSARCHITECTS.COM

PROPOSED NEW ONE FAMILY RESIDENCE FOR 540 HELENA AVE BLOCK 314, LOT 72 WYCKOFF, NJ

THIS DOCUMENT AND THE IDEAS AND DESIGNS INCORPORATED HEREIN AS AN INSTRUMENT OF PROFESSIONAL SERVICE, IS THE PROPERTY OF EVANS ARCHITECTS AND IS NOT TO BE USED IN WHOLE OR IN PART, FOR ANY OTHER PROJECT WITHOUT THE WRITTEN AUTHORIZATION OF EVANS ARCHITECTS. ALL RIGHTS RESERVED © 2021 EVANS ARCHITECT

DRW BY	DATE	REV	COMMENT
D.K.	11.18.20		PRELIMINARY DRAWINGS
D.K.	11.23.20		CUSTOMER REVIEW
D.K.	12.16.20		CUSTOMER REVIEW
D.K.	02.17.21		CONSTRUCTION DRAWINGS
D.K.	04.02.21		ARCHITECT REVIEW

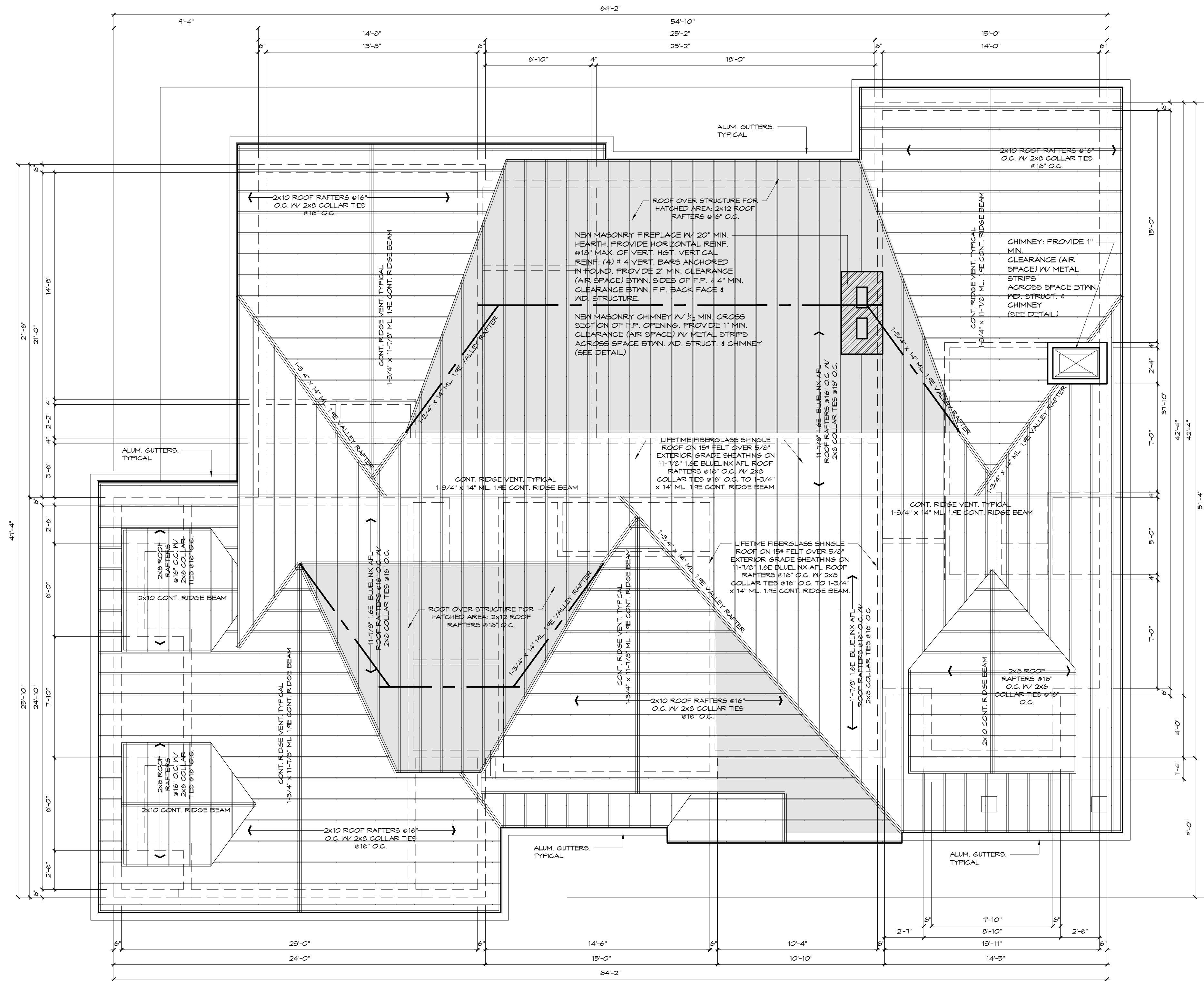
PROPOSED 2ND FLOOR PLAN

MATTHEW G. EVANS
 ARCHITECT - PLANNER

ME

SHEET NUMBER
A-3

R.A. LIC. NO. 13803
 P.P. LIC. NO. 5562



PROPOSED ROOF PLAN

SCALE: 1/4" = 1'-0"

EVANS ARCHITECTS AIA

MATTHEW G. EVANS
ARCHITECT - PROFESSIONAL PLANNER

470 CHAMBERLAIN AVENUE
PATERSON NEW JERSEY 07652
973 942-9020
MATT@EVANSARCHITECTS.COM
WWW.EVANSARCHITECTS.COM

PROPOSED NEW ONE FAMILY RESIDENCE FOR 540 HELENA AVE BLOCK 314, LOT 72 WYCKOFF, NJ

THIS DOCUMENT AND THE IDEAS AND DESIGNS INCORPORATED HEREIN AS AN INSTRUMENT OF PROFESSIONAL SERVICE, IS THE PROPERTY OF EVANS ARCHITECTS AND IS NOT TO BE USED IN WHOLE OR IN PART, FOR ANY OTHER PROJECT WITHOUT THE WRITTEN AUTHORIZATION OF EVANS ARCHITECTS. ALL RIGHTS RESERVED © 2021 EVANS ARCHITECT

DRW BY	DATE	REV	COMMENT
D.K.	11.18.20		PRELIMINARY DRAWINGS
D.K.	11.23.20		CUSTOMER REVIEW
D.K.	12.16.20		CUSTOMER REVIEW
D.K.	02.17.21		CONSTRUCTION DRAWINGS
D.K.	04.02.21		ARCHITECT REVIEW

ROOF PLAN

MATTHEW G. EVANS
ARCHITECT - PLANNER

ME

SHEET NUMBER
A-4

R.A. LIC. NO. 13803
P.P. LIC. NO. 5562



PROPOSED FRONT ELEVATION

SCALE: 1/4" = 1'-0"



PROPOSED LEFT SIDE ELEVATION

SCALE: 1/4" = 1'-0"

EVANS ARCHITECTS AIA

MATTHEW G. EVANS
ARCHITECT - PROFESSIONAL PLANNER

470 CHAMBERLAIN AVENUE
PATERSON NEW JERSEY 07652
973 942-9020
MATT@EVANSARCHITECTS.COM
WWW.EVANSARCHITECTS.COM

PROPOSED NEW ONE FAMILY RESIDENCE FOR 540 HELENA AVE BLOCK 314, LOT 72 WYCKOFF, NJ

THIS DOCUMENT AND THE IDEAS AND DESIGNS INCORPORATED HEREIN AS AN INSTRUMENT OF PROFESSIONAL SERVICE, IS THE PROPERTY OF EVANS ARCHITECTS AND IS NOT TO BE USED IN WHOLE OR IN PART, FOR ANY OTHER PROJECT WITHOUT THE WRITTEN AUTHORIZATION OF EVANS ARCHITECTS. ALL RIGHTS RESERVED © 2020 EVANS ARCHITECT

DRW BY	DATE	REV	COMMENT
D.K.	11.18.20		PRELIMINARY DRAWINGS
D.K.	11.23.20		CUSTOMER REVIEW
D.K.	12.16.20		CUSTOMER REVIEW
D.K.	02.17.21		CONSTRUCTION DRAWINGS
D.K.	04.02.21		ARCHITECT REVIEW

PROPOSED ELEVATIONS

MATTHEW G. EVANS
ARCHITECT - PLANNER

ME

SHEET NUMBER

A-5

R.A. LIC. NO. 13803
P.P. LIC. NO. 5562



PROPOSED REAR ELEVATION

SCALE: 1/4" = 1'-0"



PROPOSED RIGHT SIDE ELEVATION

SCALE: 1/4" = 1'-0"

EVANS ARCHITECTS AIA

MATTHEW G. EVANS
ARCHITECT - PROFESSIONAL PLANNER

470 CHAMBERLAIN AVENUE
PATERSON NEW JERSEY 07652
973 942-9020
MATT@EVANSARCHITECTS.COM
WWW.EVANSARCHITECTS.COM

PROPOSED NEW ONE FAMILY RESIDENCE FOR 540 HELENA AVE BLOCK 314, LOT 72 WYCKOFF, NJ

THIS DOCUMENT AND THE IDEAS AND DESIGNS INCORPORATED HEREIN AS AN INSTRUMENT OF PROFESSIONAL SERVICE, IS THE PROPERTY OF EVANS ARCHITECTS AND IS NOT TO BE USED IN WHOLE OR IN PART, FOR ANY OTHER PROJECT WITHOUT THE WRITTEN AUTHORIZATION OF EVANS ARCHITECTS. ALL RIGHTS RESERVED © 2020 EVANS ARCHITECT

DRW BY	DATE	REV	COMMENT
D.K.	11.18.20		PRELIMINARY DRAWINGS
D.K.	11.23.20		CUSTOMER REVIEW
D.K.	12.16.20		CUSTOMER REVIEW
D.K.	02.17.21		CONSTRUCTION DRAWINGS
D.K.	04.02.21		ARCHITECT REVIEW

PROPOSED ELEVATIONS

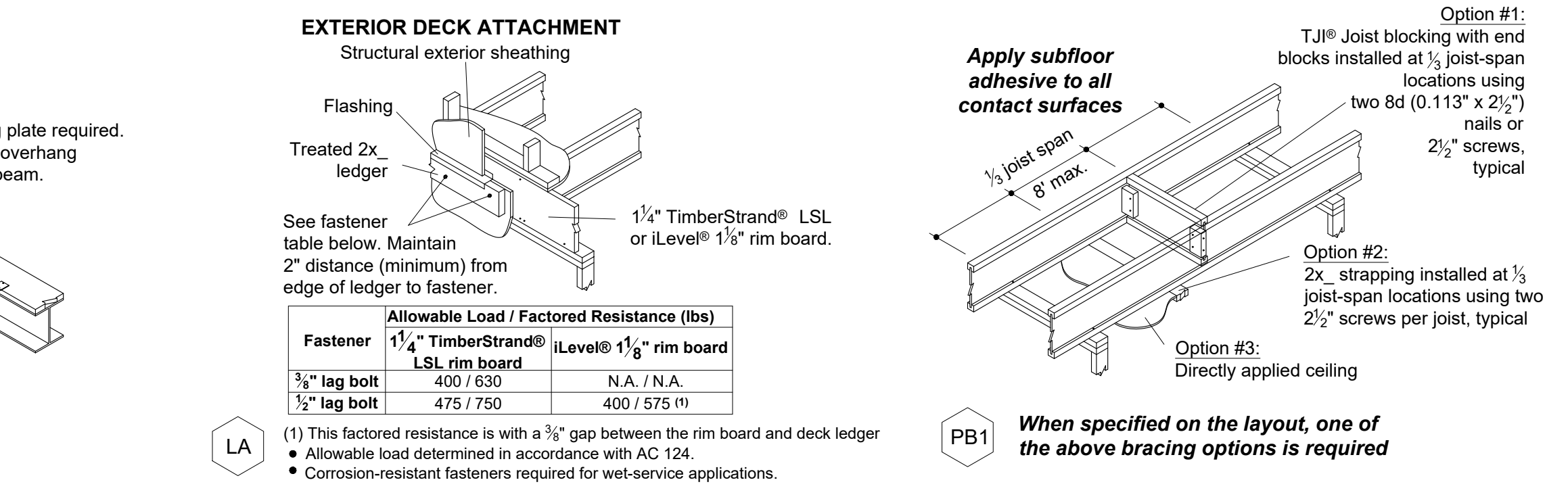
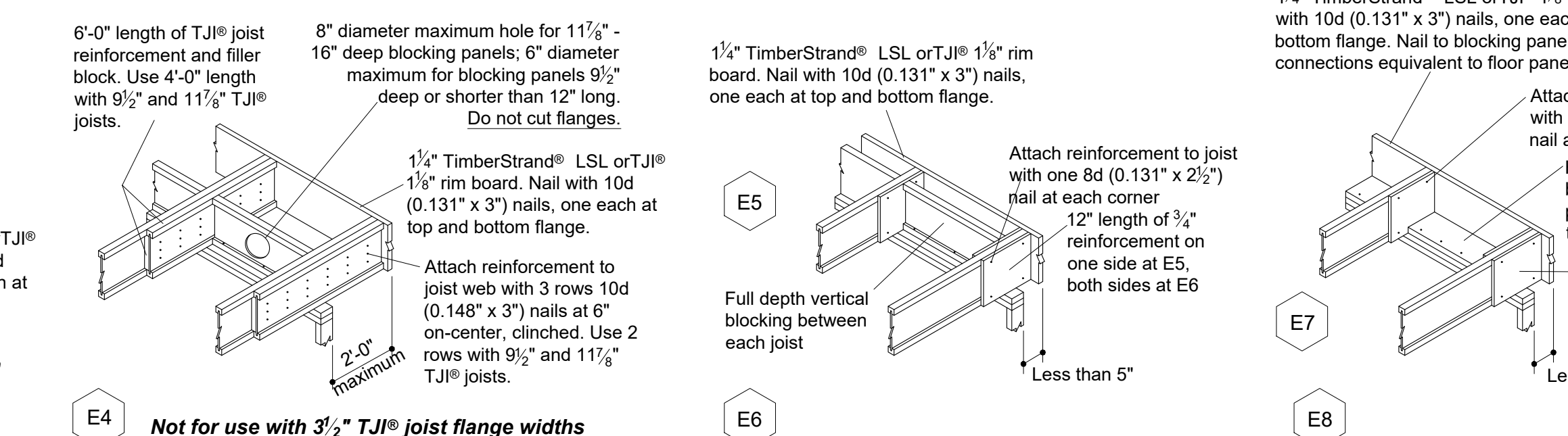
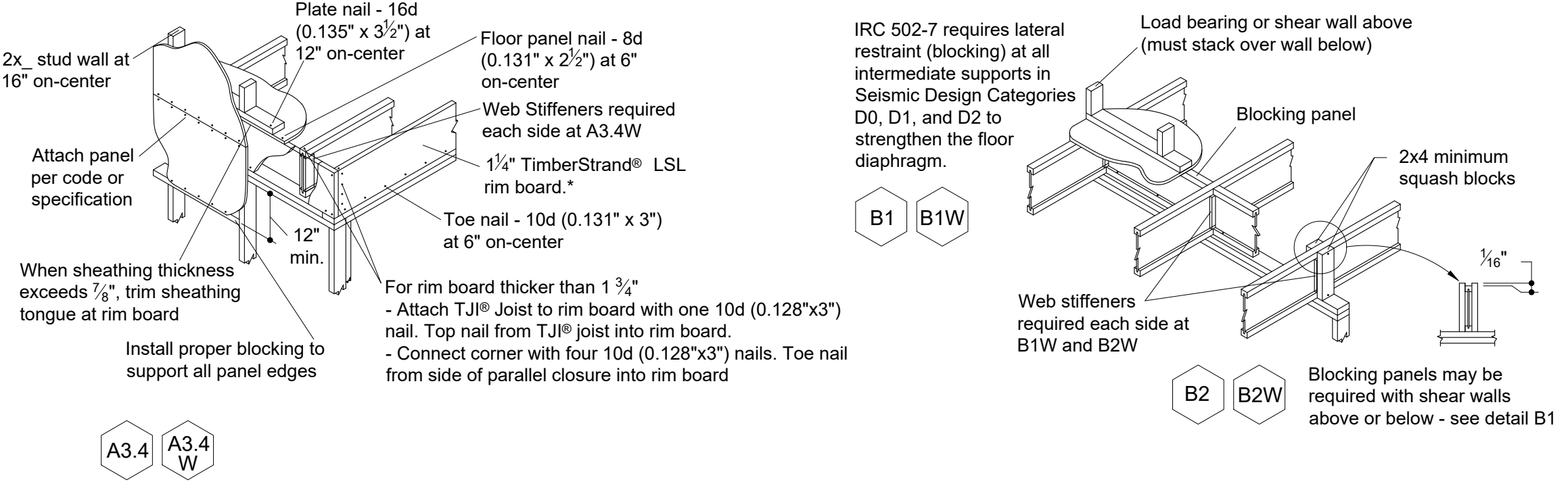
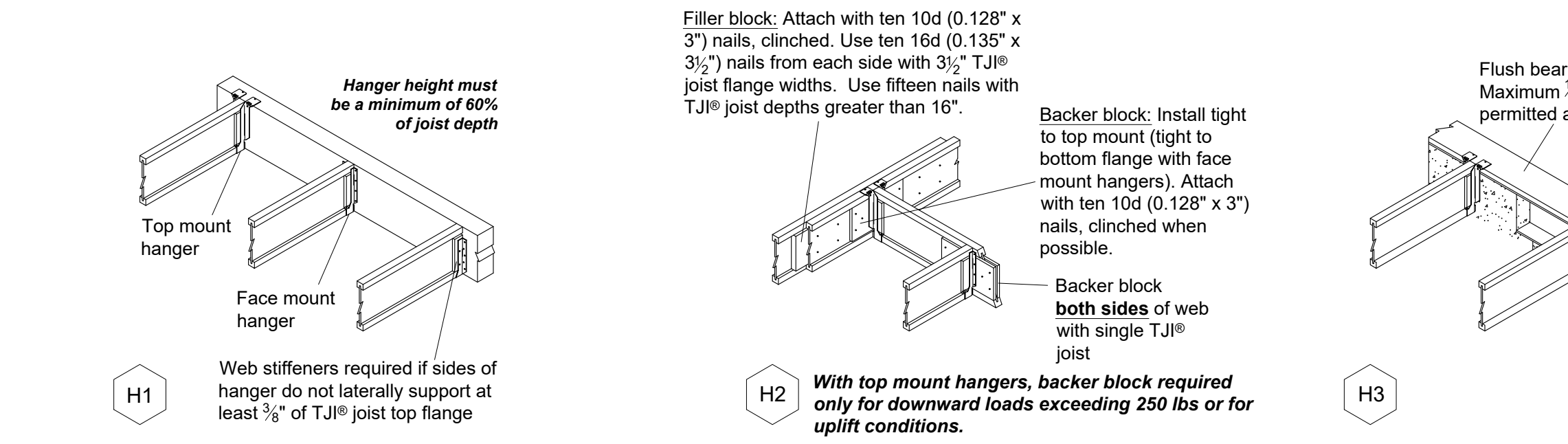
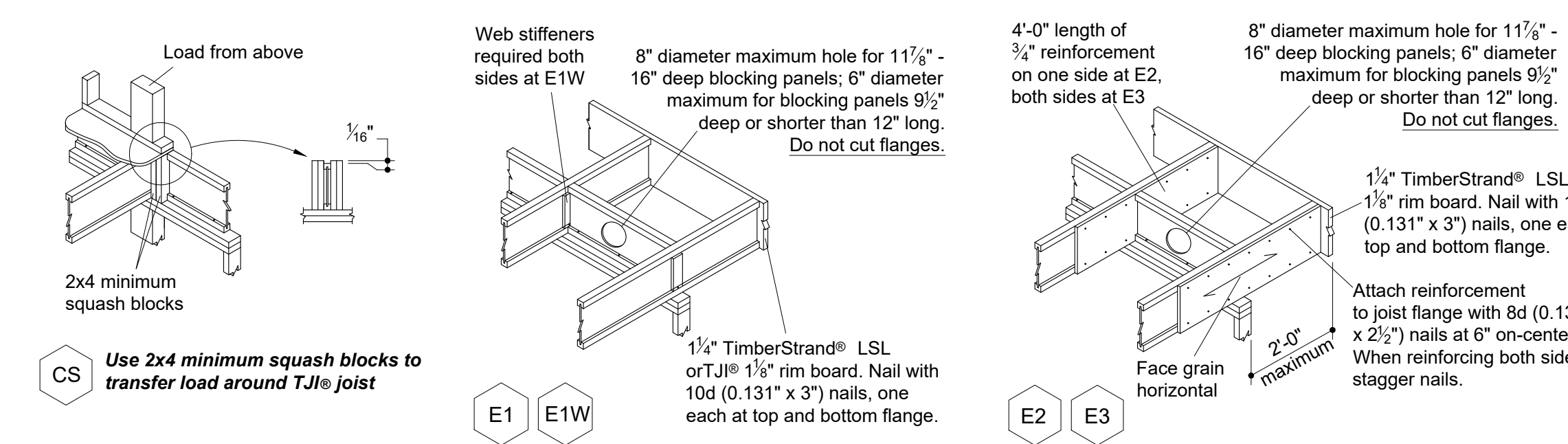
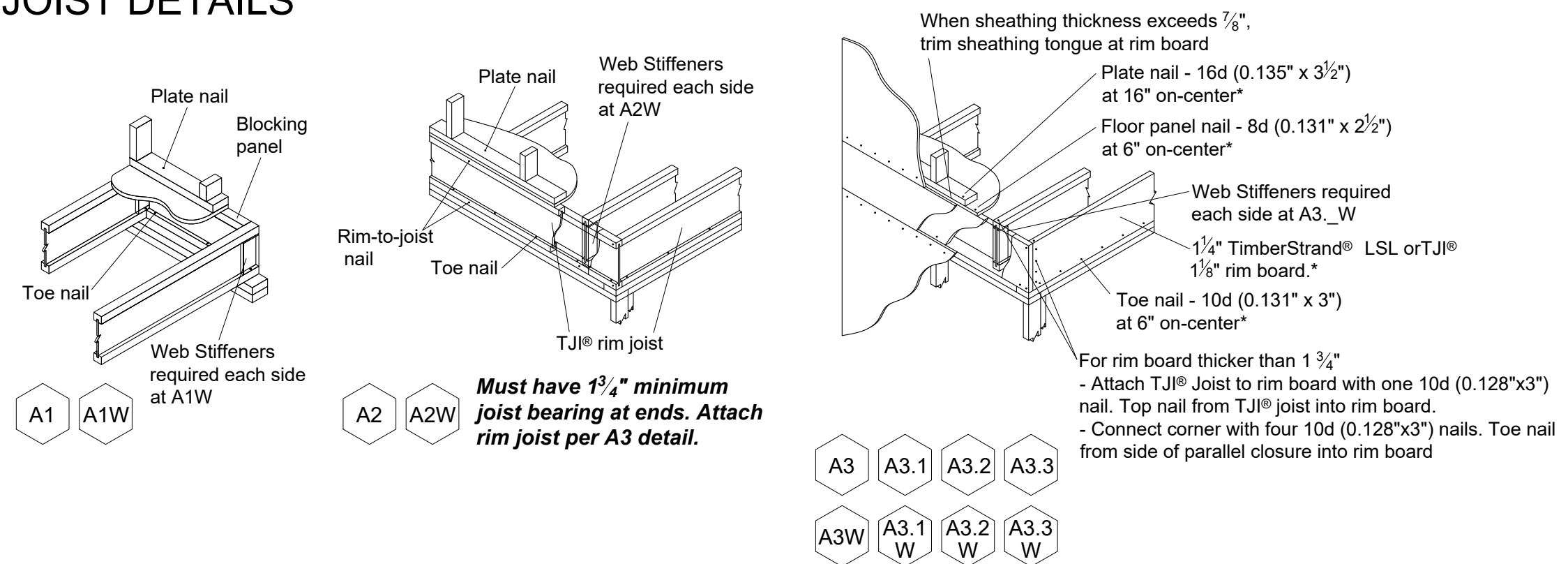
MATTHEW G. EVANS
ARCHITECT - PLANNER

ME

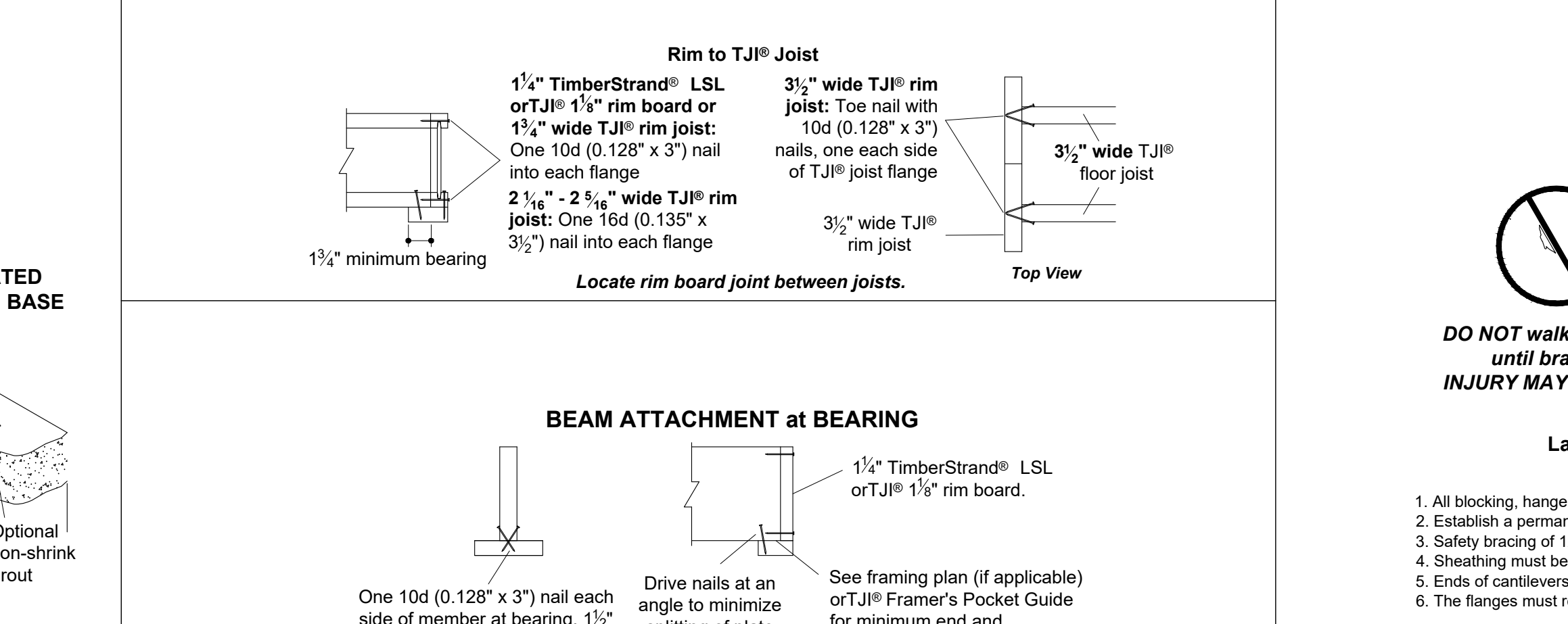
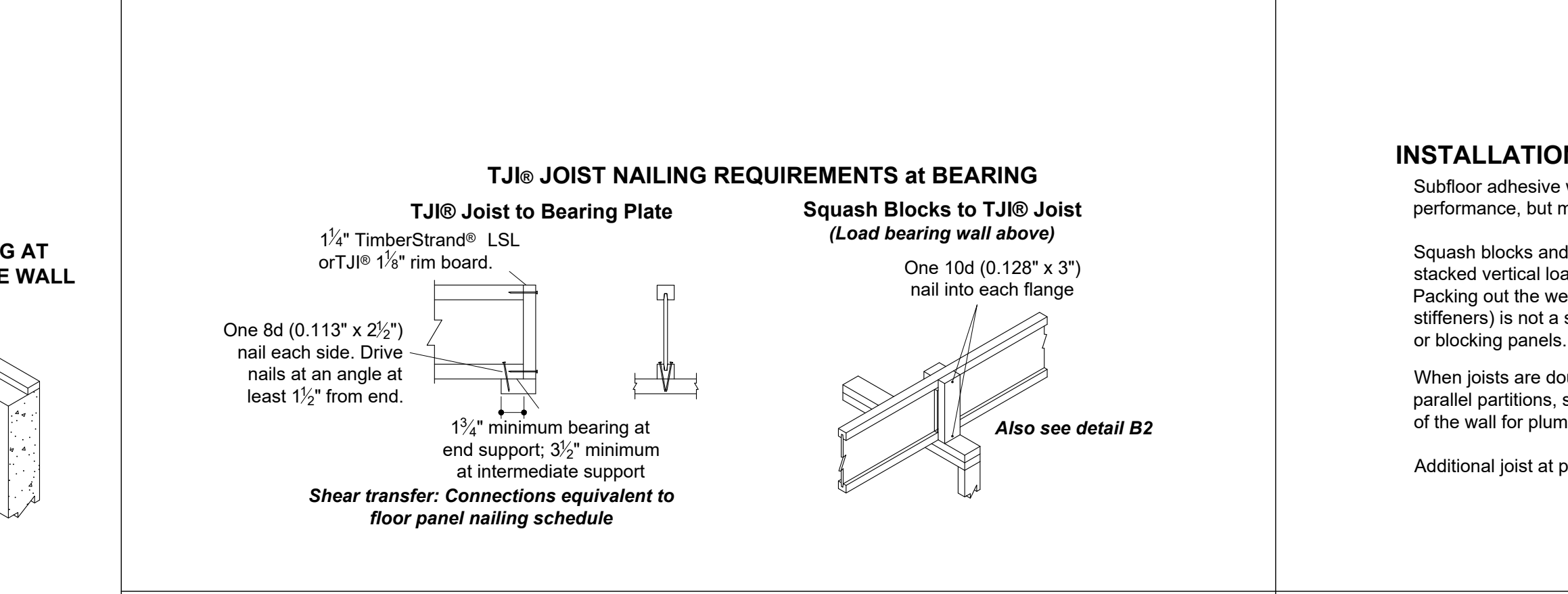
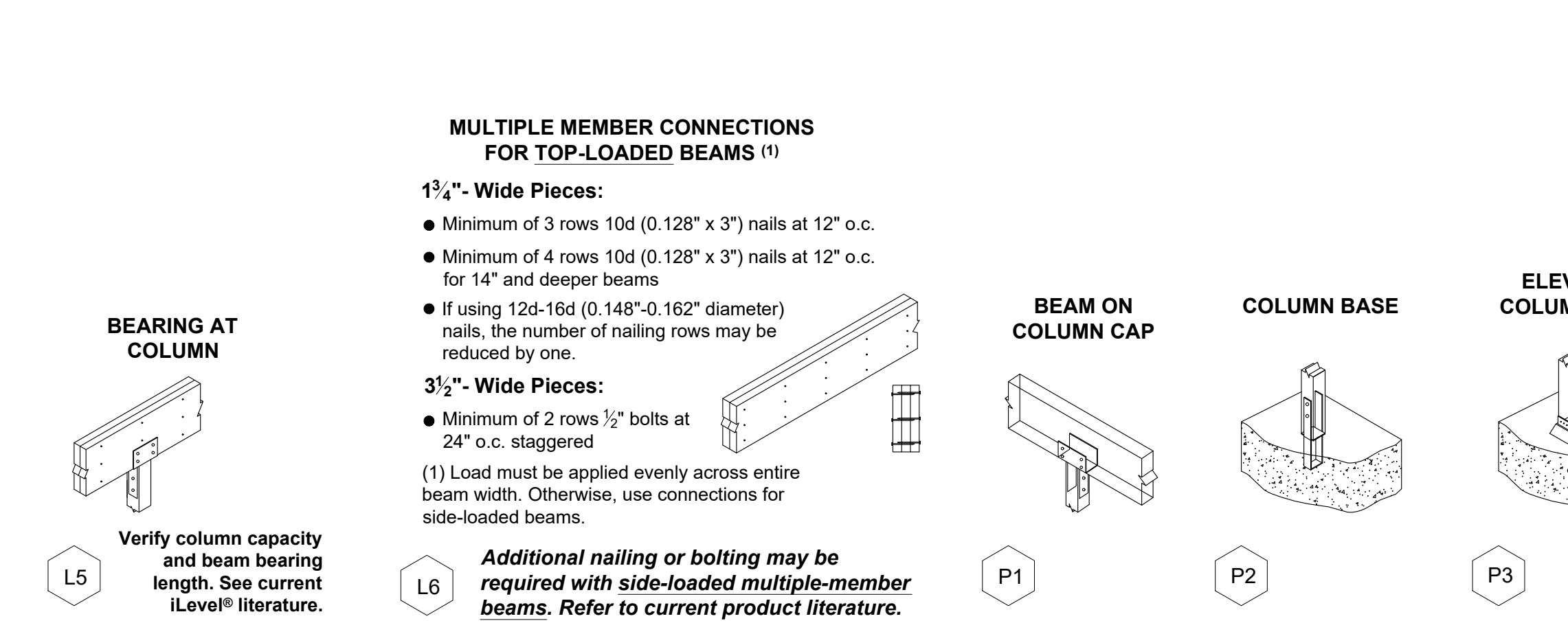
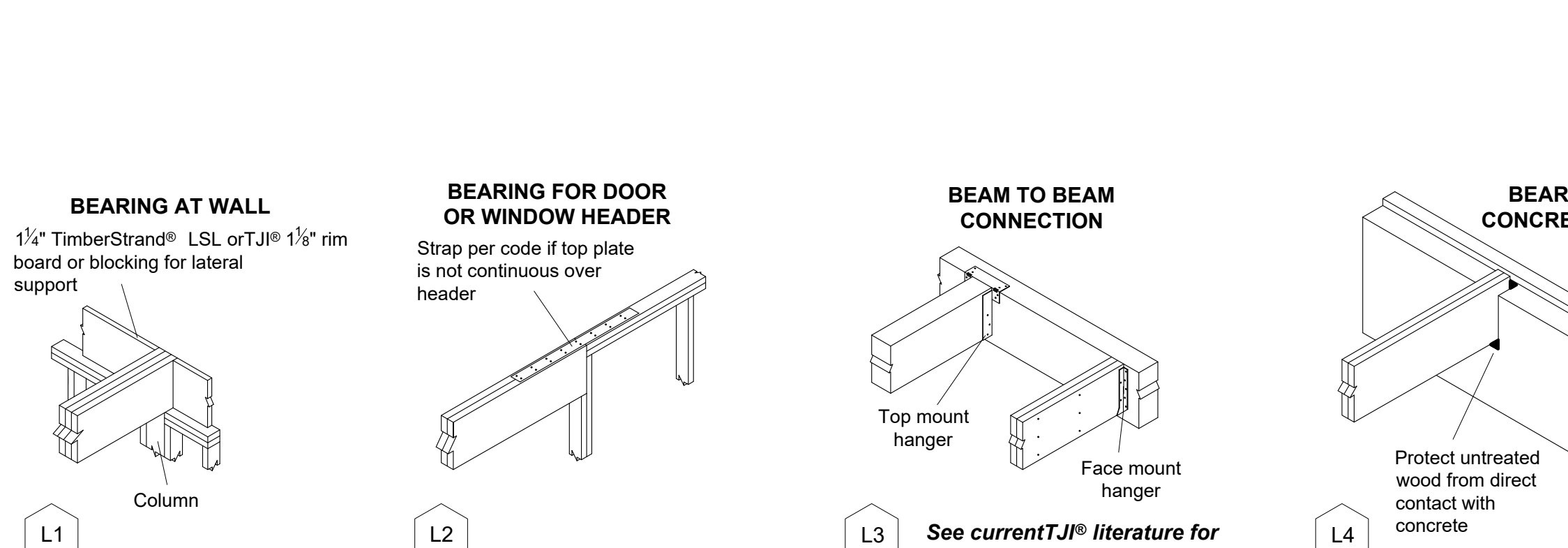
SHEET NUMBER
A-6

R.A. LIC. NO. 13803
P.P. LIC. NO. 5562

JOIST DETAILS



BEAM and COLUMN DETAILS



INSTALLATION TIPS

Subfloor adhesive will improve floor performance, but may not be required.

Squash blocks and blocking panels carry stacked vertical loads (details B1 and B2). Packing out the web of a TJI joist (with web stiffeners) is not a substitute for squash blocks or blocking panels.

When joists are doubled at non-load bearing parallel partitions, space joists apart the width of the wall for plumbing or HVAC.

Additional joist at plumbing drop (see detail).

WARNING

Joists are unstable until braced laterally

Bracing Includes:

- Blocking
- Hangers
- Sheathing
- Rim Board
- Strut Lines
- Rim Joist

DO NOT walk on joists until braced. INJURY MAY RESULT.

DO NOT walk on joists that are lying flat.

DO NOT stack building materials on unheated joists. Stack only over beams or walls.

WARNING NOTES:

Lack of proper bracing during construction can result in serious accidents. Observe the following guidelines:

- All blocking, hangers, rim boards and rim joists at the end supports of the TJI joists must be completely installed and properly nailed.
- Establish a permanent deck (sheathing), fastened to the first 4 feet of joists at the end of the bay or braced end wall.
- Safely bracing of 1x4 (minimum) must be nailed to a braced end wall or sheathed area and to each joist.
- Sheathing must be completely attached to each TJI joist before additional loads can be placed on the system.
- Ends of cantilevers require safety bracing on both the top and bottom flanges.
- The flanges must remain straight within 1/2" from true alignment.

EVANS ARCHITECTS AIA

MATTHEW G. EVANS
ARCHITECT - PROFESSIONAL PLANNER

470 CHAMBERLAIN AVENUE
PATERSON NEW JERSEY 07652
973 942-9020
MATT@EVANSARCHITECTS.COM
WWW.EVANSARCHITECTS.COM

PROPOSED NEW ONE FAMILY RESIDENCE FOR 540 HELENA AVE BLOCK 314, LOT 72 WYCKOFF, NJ

THIS DOCUMENT AND THE IDEAS AND DESIGNS INCORPORATED HEREIN AS AN INSTRUMENT OF PROFESSIONAL SERVICE, IS THE PROPERTY OF EVANS ARCHITECTS AND IS NOT TO BE USED IN WHOLE OR IN PART, FOR ANY OTHER PROJECT WITHOUT THE WRITTEN AUTHORIZATION OF EVANS ARCHITECTS. ALL RIGHTS RESERVED © 2020 EVANS ARCHITECT

DRW BY	DATE	REV	COMMENT
D.K.	11.18.20		PRELIMINARY DRAWINGS
D.K.	11.23.20		CUSTOMER REVIEW
D.K.	12.16.20		CUSTOMER REVIEW
D.K.	02.17.21		CONSTRUCTION DRAWINGS
D.K.	04.02.21		ARCHITECT REVIEW

TJI DETAILS

MATTHEW G. EVANS
ARCHITECT - PLANNER

ML

SHEET NUMBER
A-8

R.A. LIC. NO. 13803
P.P. LIC. NO. 5662