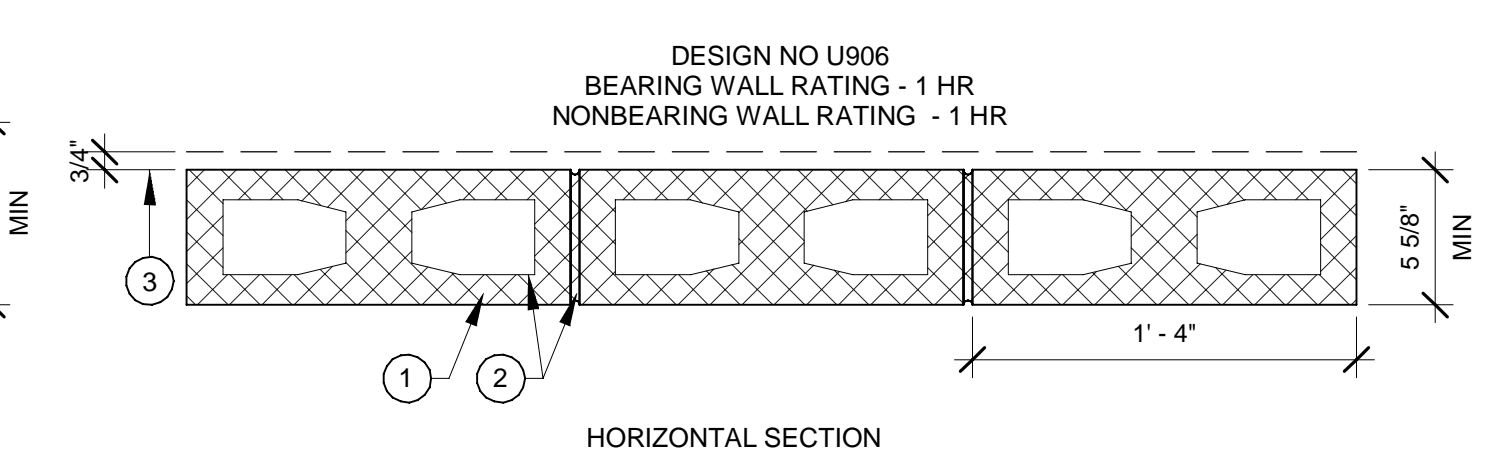


1. CONCRETE BLOCKS - VARIOUS DESIGNS. CLASSIFICATIONS D-2 (2HR)
SEE CONCRETE BLOCKS CATEGORY FOR LIST OF ELIGIBLE MANUFACTURERS.
2. MORTAR - BLOCKS LAID IN FULL BED OF MORTAR NOM 3/8 IN THICK OF NOT LESS THAN 2-1/4 AND NOT MORE THAN 3-1/2 PARTS OF CLEAN SHARP SAND TO 1 PART PORTLAND CEMENT (PROPORTIONED BY VOLUME AND NOT MORE THAN 50 PERCENT HYDRATED LIME BY CEMENT VOLUME VERTICAL JOINTS STAGGERED)

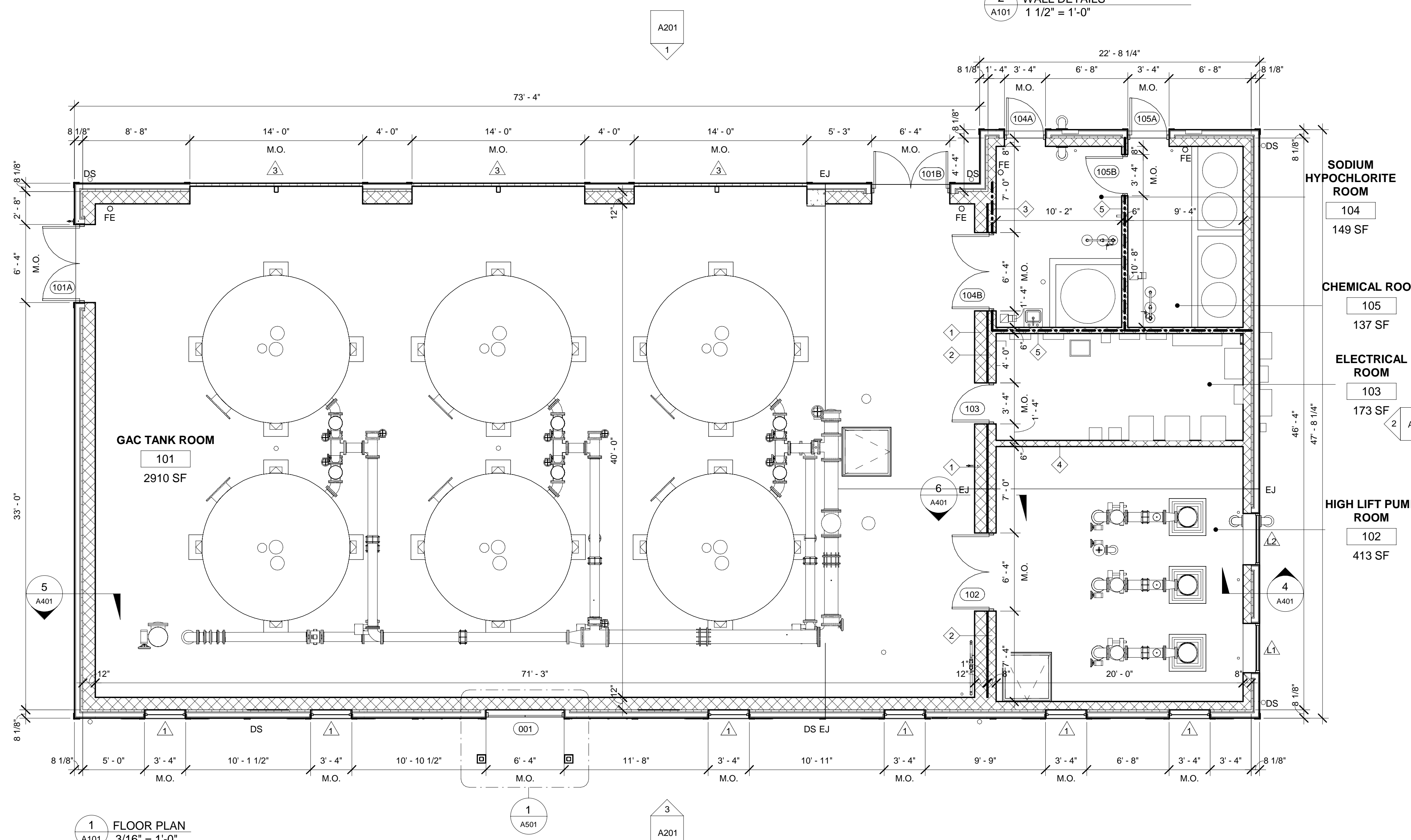
*BEARING THE UL CLASSIFICATION MARKING

2
A101 1 1/2" = 1'-0"

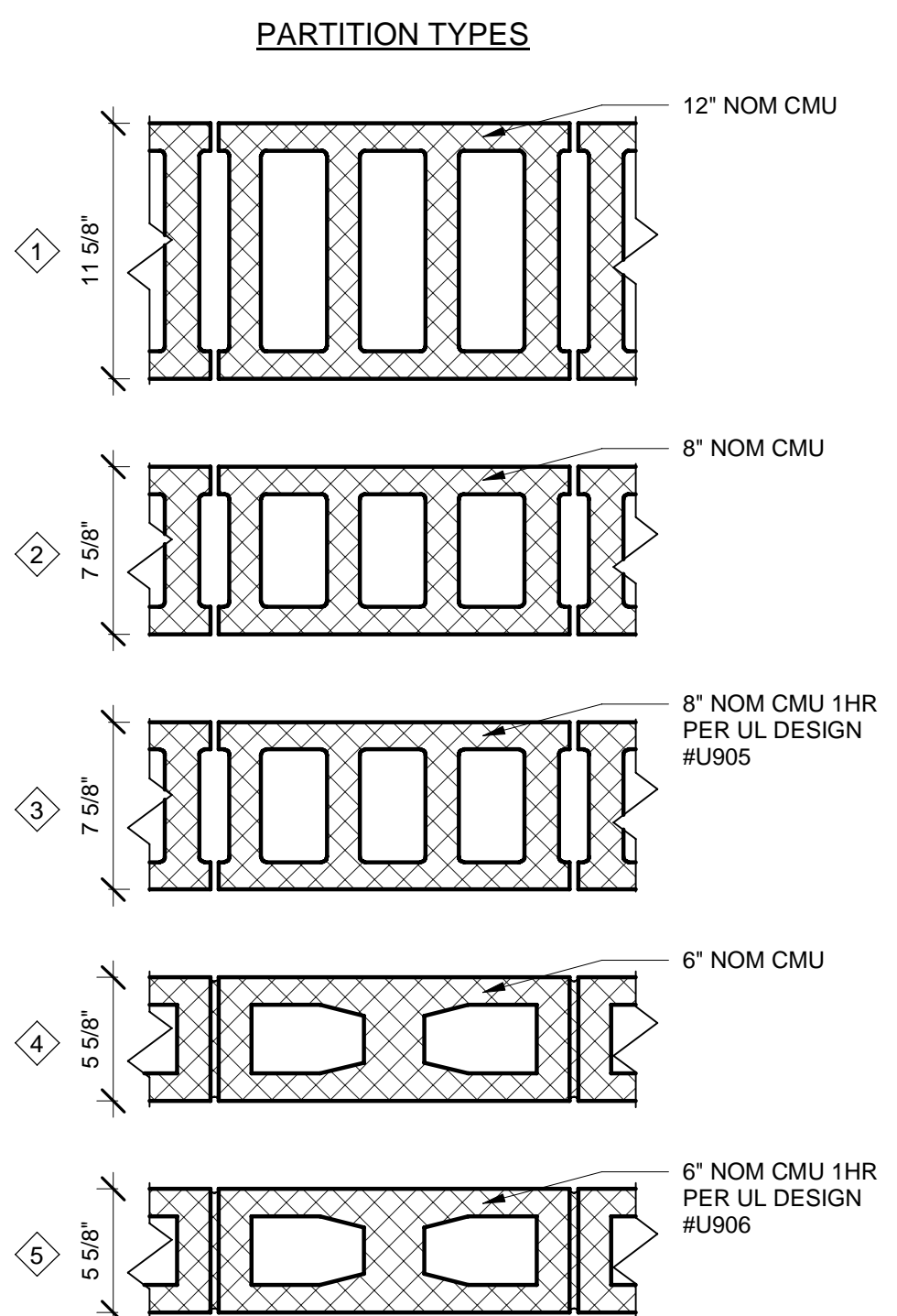


1. CONCRETE BLOCKS - NOMINAL 6" X 8" X 16", HOLLOW OR SOLID. VARIOUS DESIGNS. CLASSIFICATION (2HR).
SEE CONCRETE BLOCKS CATEGORY FOR LIST OF ELIGIBLE MANUFACTURERS.
2. MORTAR - BLOCKS LAID IN FULL BED OF MORTAR, NOM. 3/8" THICK, OF NOT LESS THAN 2-1/4 AND NOT MORE THAN 3-1/2 PARTS OF CLEAN SHARP SAND TO 1 PART PORTLAND CEMENT (PROPORTIONED BY VOLUME) AND NOT MORE THAN 50 PERCENT HYDRATED LIME (BY CEMENT VOLUME). VERTICAL JOINTS STAGGERED.
3. PORTLAND CEMENT STUCCO OR GYPSUM PLASTER - ADD 1/2HR TO CLASSIFICATION IF USED. ATTACHED TO CONCRETE BLOCKS (ITEM 1).

*INDICATES SUCH PRODUCTS SHALL BEAR THE UL OR cUL CERTIFICATION MARK



1 FLOOR PLAN
A101 3/16" = 1'-0"



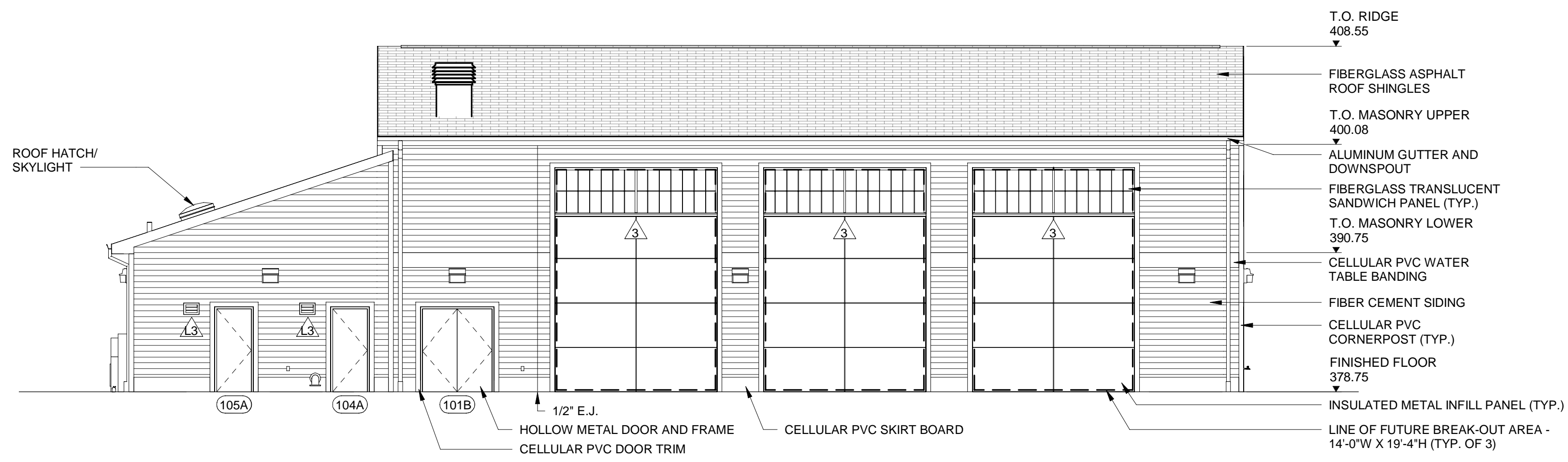
- LEGEND
- XX DOOR NUMBER
 - FIRE EXTINGUISHER
 - FE UL RATED 2A-10B:C FIRE EXTINGUISHERS MOUNTED ON WALL OR STRUCTURE PER NFPA 10
 - O
 - 1-HR RATED FIRE BARRIER WALL
 - 8" CMU WALL - UL DESIGN NO. U905
 - 6" CMU WALL - UL DESIGN NO. U906
 - CMU WALL
 - DS 3"x4" RECTANGULAR PREFINISHED ALUM DOWNSPOUT
 - WINDOW TAG, SEE SHEET A601 FOR WINDOW TYPES.
 - # PARTITION TYPES

NOTES:
1. DIMENSIONS ARE TO FACE OF MASONRY WALL OR FACE OF METAL STUD

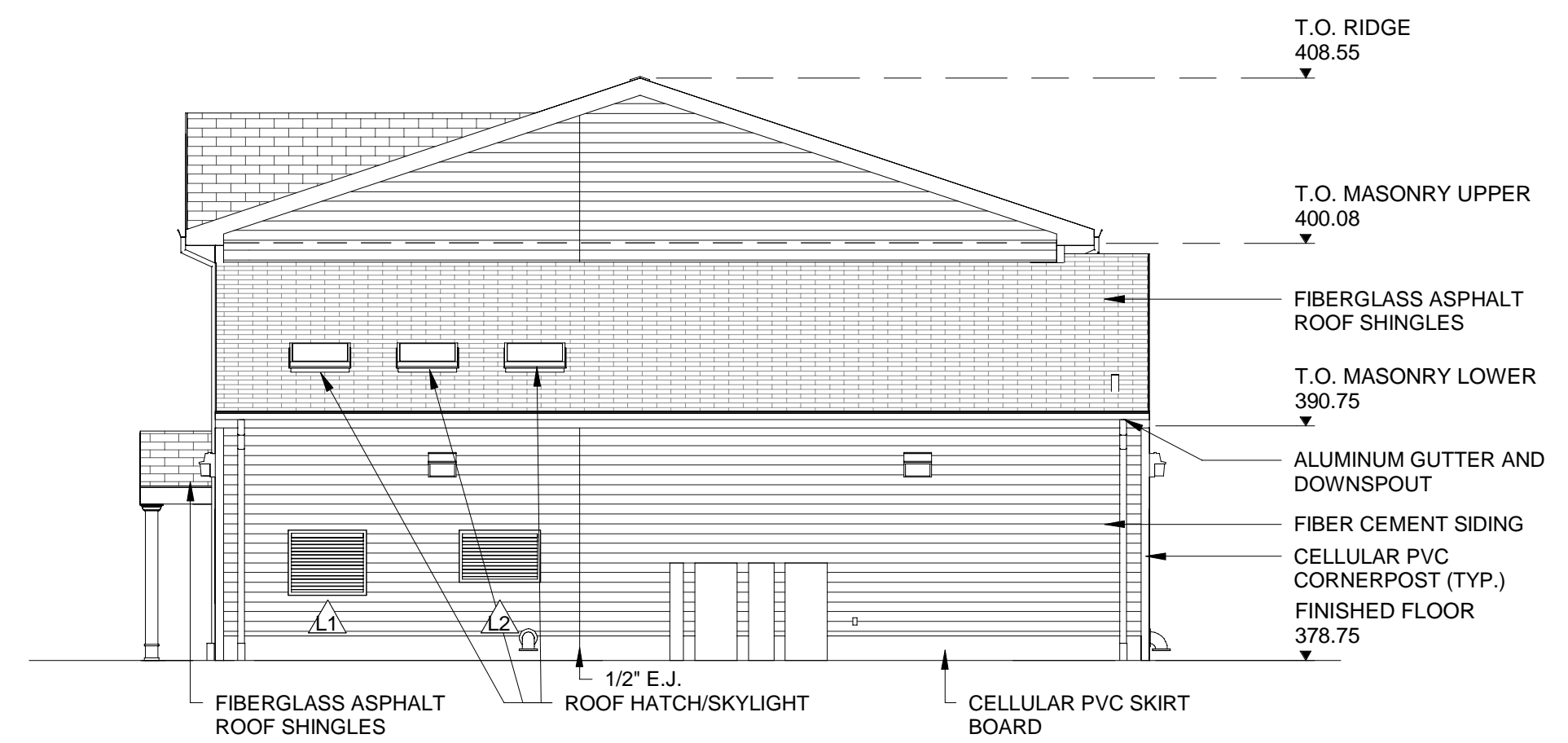


© Mott MacDonald
This document is issued for the party which commissioned it and for specific purposes connected with the captioned project only. It should not be relied upon by any other party or used for any other purpose. We accept no responsibility for the consequences of this document being relied upon by any other party, or being used for any other purpose, or containing any error or omission which is due to an error or omission in data supplied to us by other parties.

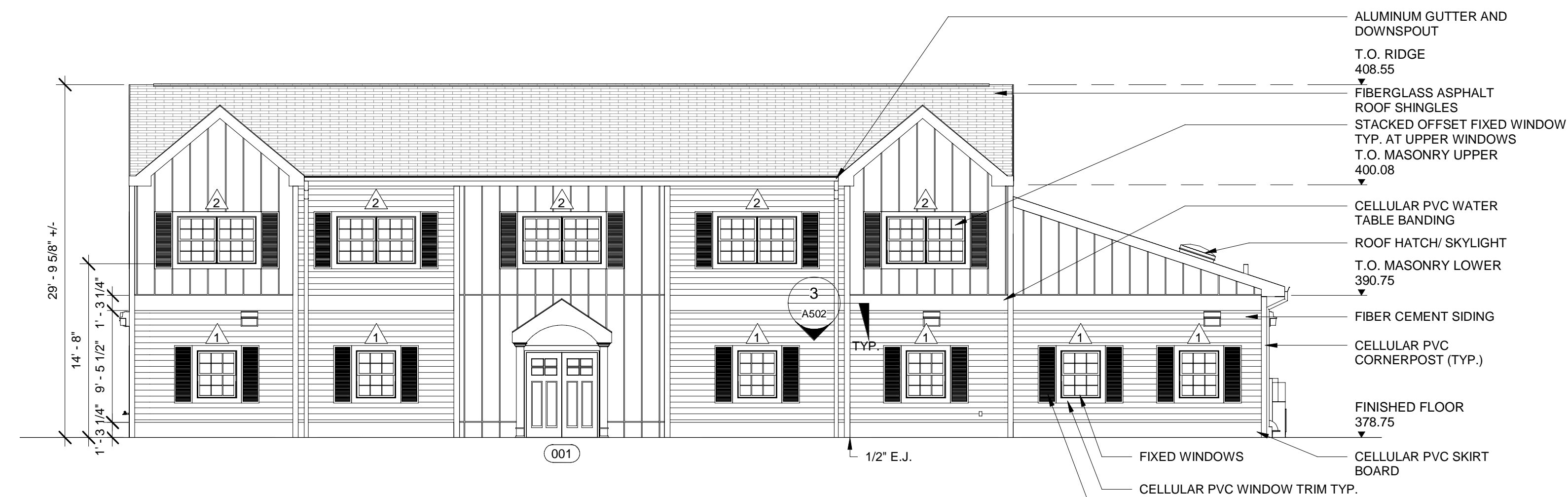
M MOTT MACDONALD Certificate No. 24GA28016600	111 Wood Avenue Suite 500 Iselin, New Jersey 08830-1005 United States T - + 973-397-3400 F - + 973-376-1072 www.mottmacamericas.com	Client RIDGEWOOD WATER 131 NORTH MAPLE AVENUE RIDGEWOOD, NJ 07450	ANTHONY F. PEDRO Professional Engineer Lic. NO. 37905			Designed S.CASANO Eng check	Title PFAS TREATMENT PRELIMINARY ARCHITECTURAL AMES TF FLOOR PLAN
			Drawn R.WOJCIECHOWSKI Coordination	Dwg check P.BASTARDO Approved	Scale 3/16"=1'-0" Status	Rev Security STD	
Project Number 507102802			B/O 8	Total 10	Drawing Number A101		
1 Rev Date Drawn Description Ch'k'd App'd	1/5/2023 Rev Date Drawn Description Ch'k'd App'd	1/5/2023 Rev Date Drawn Description Ch'k'd App'd	1/5/2023 Rev Date Drawn Description Ch'k'd App'd	1/5/2023 Rev Date Drawn Description Ch'k'd App'd	1/5/2023 Rev Date Drawn Description Ch'k'd App'd	1/5/2023 Rev Date Drawn Description Ch'k'd App'd	



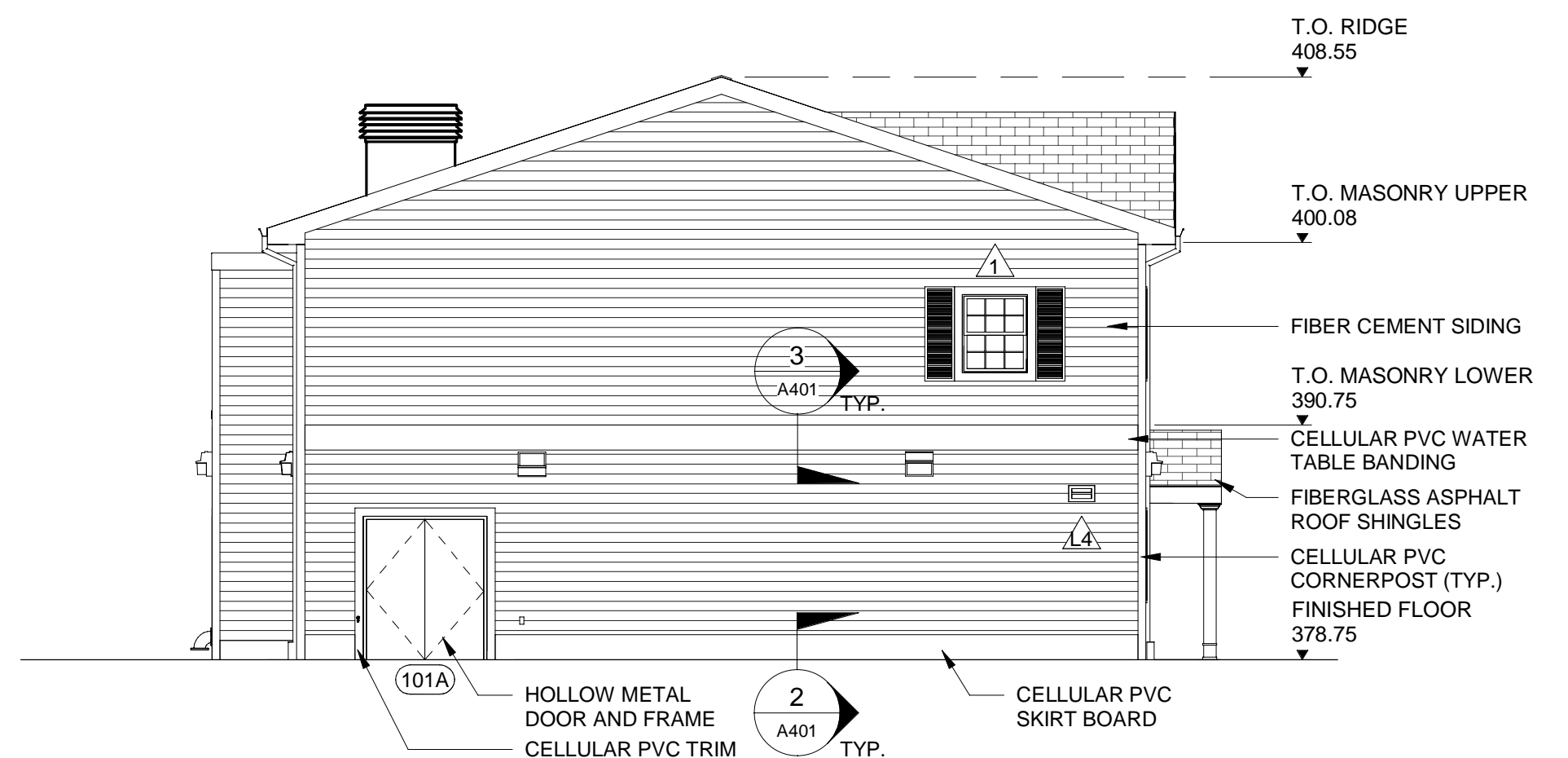
1 NORTH ELEVATION
A201 1/8" = 1'-0"



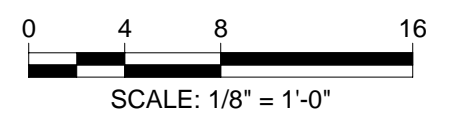
2 EAST ELEVATION
A201 1/8" = 1'-0"



3 SOUTH ELEVATION
A201 1/8" = 1'-0"



4 WEST ELEVATION
A201 1/8" = 1'-0"



© Mott MacDonald

This document is issued for the party which commissioned it and for specific purposes connected with the captioned project only. It should not be relied upon by any other party or used for any other purpose. We accept no responsibility for the consequences of this document being relied upon by any other party, or containing any error or omission which is due to an error or omission in data supplied to us by other parties.

M M
MOTT MACDONALD
Certificate No. 24GA28016600

111 Wood Avenue
Suite 500
Iselin, New Jersey 08830-1005
United States

T. + 973-397-3400
F. + 973-376-1072
www.mottmacamericas.com

Client
RIDGEWOOD WATER
131 NORTH MAPLE AVENUE
RIDGEWOOD, NJ 07450

Rev	Date	Drawn	Description	Ch'k'd	App'd
1	1/5/2023		Wyckoff Planning Boar Resubmission		

ANTHONY F. PEDRO
Professional Engineer Lic. NO. 37905



Project Number	B/O	Total
507102802	9	10

Designed	S.CASANO	Eng check	
Drawn	R.WOJCIECHOWSKI	Coordination	
Dwg check	P.BASTARDO	Approved	
Scale	Status	Rev	Security
1/8" = 1'-0"			STD
Drawing Number		A201	

Title
PFAS TREATMENT PRELIMINARY
ARCHITECTURAL AMES TF ELEVATIONS