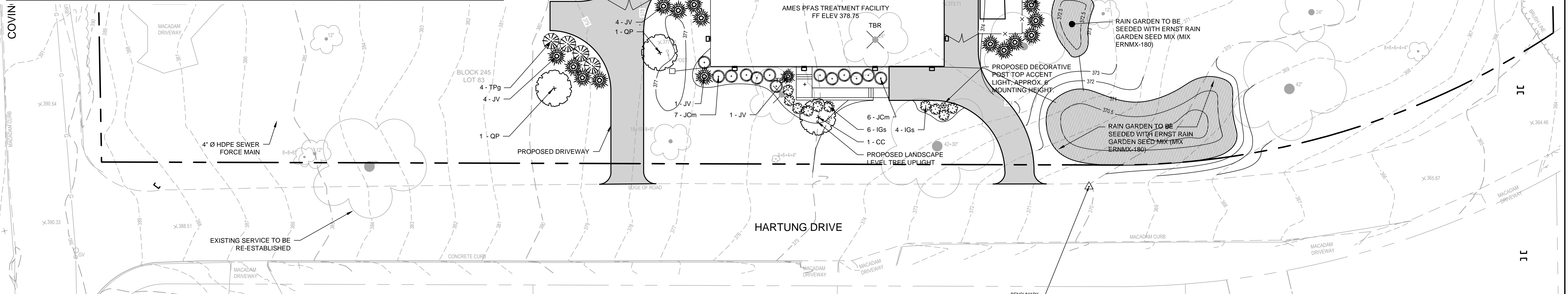
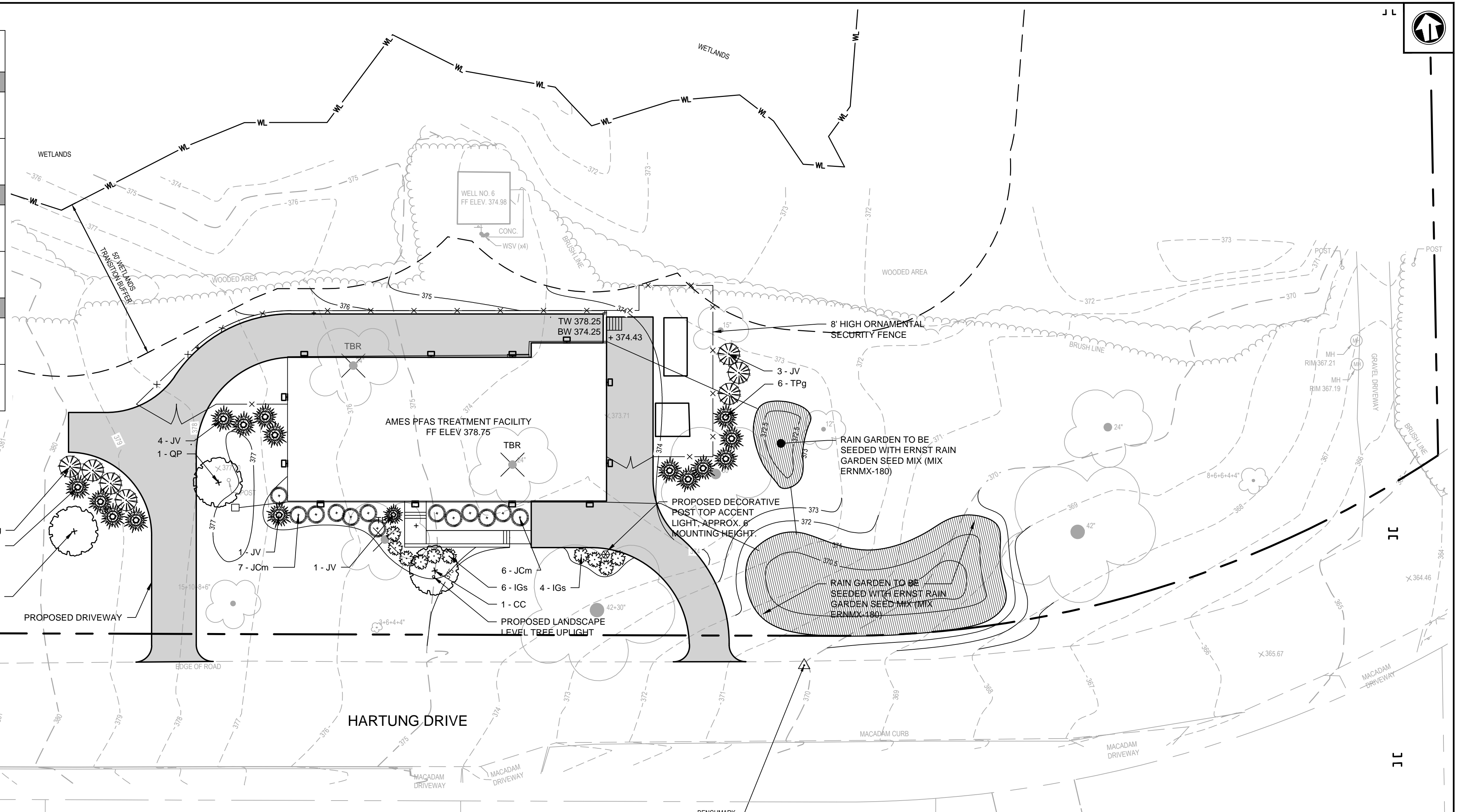
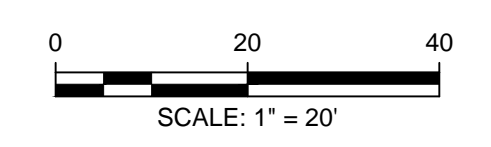


SYMBOL	ABR.	QTY.	BOTANICAL NAME	COMMON NAME	SIZE	SPACING	NOTES
TREES - DECIDUOUS							
	CC	1	Cercis canadensis	Eastern Redbud	7' - 8', B&B	See Plan	Mature size: 20' - 25' h. & w.
	QP	2	Quercus Phellos	Willow Oak	2.5' - 3' Cal., B&B	See Plan	Mature size: 40' - 60' h. & 30' - 40' w.
TREES - CONIFERS							
	JV	13	Juniperus virginiana	Eastern Redcedar	6' - 7', B&B	See Plan	Mature size: 40' - 50' h. x 8'-20' w
	TPg	10	Thuja plicata 'Green Giant'	Giant Arborvitae	5'-6', B&B	See Plan	Mature size: 50' - 60' h. x 12' - 20' w
SHRUBS							
	IGs	10	Ilex glabra 'Shamrock'	Inkberry Holly	18" - 24" 3 Gal.	See Plan	Mature size: 3' - 4' h. x 3' - 4' w
	JCm	13	Juniperus chinensis 'Mint Julep'	Mint Julep Juniper	18" - 24" 3 Gal.	See Plan	Mature size: 4' - 5' h. x 5' - 6' w



- GENERAL LANDSCAPE NOTES**
- THIS PLAN SHALL BE USED FOR LANDSCAPE PLANTING PURPOSES ONLY. EXAMINE ALL ENGINEERING DRAWINGS AND FIELD CONDITIONS FOR SPECIFIC LOCATIONS OF UTILITIES, STRUCTURES, ETC. AND NOTIFY THE PROJECT PROFESSIONAL IN REFERENCE TO ANY DISCREPANCIES OR LOCATION CONFLICTS PRIOR TO PLANTING INSTALLATION.
 - ALL PLANT MATERIAL SHALL CONFORM TO THE AMERICAN STANDARD FOR NURSERY STOCK, ANSI Z60.1 CURRENT EDITION. THE PLANT MATERIAL SHALL BE TRUE TO SPECIES, VARIETY, SIZE AND BE CERTIFIED DISEASE AND INSECT FREE. THE PROJECT PROFESSIONAL RESERVES THE RIGHT TO REJECT PLANT MATERIAL WHEN DELIVERED TO THE SITE AND UP TO THE TIME OF FINAL ACCEPTANCE.
 - NO PLANT SUBSTITUTIONS SHALL BE PERMITTED WITH REGARDS TO SIZE, SPECIES VARIETY, ETC. WITHOUT WRITTEN PERMISSION OF THE PROJECT PROFESSIONAL. WRITTEN PROOF OF PLANT MATERIAL UNAVAILABILITY MUST BE PROVIDED.
 - LOCATION AND SPACING FOR PROPOSED VEGETATION IS AS SHOWN ON THE LANDSCAPE PLAN. FINAL ADJUSTMENTS TO BE MADE IN THE FIELD AND AS DIRECTED BY PROJECT PROFESSIONAL TO REFLECT EXISTING SITE CONDITIONS.
 - THE PLANTING PLAN SHALL TAKE PRECEDENCE OVER THE PLANT SCHEDULE SHOULD ANY PLANT QUANTITY DISCREPANCIES OCCUR.
 - ALL PLANT MATERIAL SHALL BE PLANTED IN CONFORMANCE WITH THE TYPICAL PLANTING DETAILS AND ACCEPTED HORTICULTURAL PRACTICES. INSTALL ALL PLANT MATERIAL ON UNDISTURBED GRADE. CUT AND REMOVE BURLAP FROM THE TOP ONE-THIRD OF THE ROOT BALL. NO SYNTHETIC MATERIAL IS TO REMAIN IN PLANTING HOLES. WIRE BASKETS ARE TO BE CUT AND FOLDED TO BOTTOM OF PLANTING HOLE AWAY FROM SIDES OF ROOT BALL. PLANT ROOT FLAIR SHALL BE EXPOSED AT TIME OF PLANTING. PLANTS SHALL BE INSTALLED AT SAME GRADE AS GROWN IN NURSERY.
 - NEWLY INSTALLED PLANT MATERIAL SHALL BE THOROUGHLY WATERED AT THE TIME OF INSTALLATION BY THE LANDSCAPE CONTRACTOR. LANDSCAPE CONTRACTOR IS RESPONSIBLE FOR THE REGULAR WATERING OF PLANT MATERIAL THROUGH THE FIRST YEAR OF GROWTH.
 - ALL PLANT MATERIAL SHALL BE GUARANTEED BY THE CONTRACTOR FOR ONE (1) YEAR AFTER THE DATE OF FINAL ACCEPTANCE.
 - ALL DISTURBED AREAS SHALL RECEIVE TEMPORARY AND PERMANENT STABILIZATION DEPENDING UPON STAGE OF WORK AND TIME OF YEAR (REFER TO STATE SOIL EROSION AND SEDIMENT CONTROL REGULATIONS). ALL DISTURBED AREAS TO BE RESTORED TO THE SATISFACTION OF THE PROJECT PROFESSIONAL.
 - PROVIDE SUSTAINED RELEASE 5-10-5 FERTILIZER FOR ALL PLANT MATERIAL IN QUANTITIES AS PER MANUFACTURER'S RECOMMENDATIONS. THOROUGHLY MIX IN TOP 12" OF ALL PLANTING AREAS.
 - ALL PLANTS ARE SHOWN SEMI-MATURE SIZE ON PLANS. SIZES INDICATED IN PLANT LIST ARE SIZES AT TIME OF INSTALLATION.
 - TREES TO BE HANDLED BY ROOT BALL ONLY. HANDLING OF TREES BY THE TRUNK OR THE PLACING OF STRAPS AROUND THE TRUNK WILL BE CAUSE FOR IMMEDIATE REJECTION OF PLANT MATERIAL.
 - TREES TO BE INSTALLED WITH SAME ORIENTATION AS AT PLACE GROWN. NORTH SIDE OF TREE TO BE IDENTIFIED PRIOR TO DIGGING.
 - CONTRACTOR IS RESPONSIBLE FOR THE INITIAL PRUNING OF TREES. PRUNING TO BE LIMITED TO CROSSOVER LIMBS, CO-DOMINANT LEADERS, AND BROKEN OR DEAD BRANCHES. SOME INTERIOR TWIGS AND LATERAL BRANCHES MAY BE PRUNED; HOWEVER, DO NOT REMOVE THE TERMINAL BUDS OF BRANCHES THAT EXTEND TO THE EDGE OF THE CROWN.
 - CONTRACTOR IS RESPONSIBLE FOR THE REMOVAL OF TREE STAKES 1 YEAR FROM THE DATE OF FINAL ACCEPTANCE.
 - CONTRACTOR IS TO PROVIDE HERBIVORY CONTROLS, INVASIVE SPECIES MANAGEMENT, AND IRRIGATION MEASURES AS NEEDED TO ENSURE SURVIVAL OF LANDSCAPE STOCK. CONTROL AND MANAGEMENT MEASURES SUCH AS FENCING, PLANTING CAGES, INVASIVE SPECIES PROTOCOL AND TEMPORARY WATERING APPARATUS TO BE APPROVED BY THE CLIENT PRIOR TO INSTALLATION.

LANDSCAPE PLAN
SCALE: 1" = 20'



MOTT MACDONALD
Certificate No. 24GA28016600

111 Wood Avenue South
Iselin, New Jersey 08830-1005
United States

T +1 973-379-3400
F +1 973-376-1072
www.mottmacamericas.com

Client
RIDGEWOOD WATER
111 NORTH MAPLE AVENUE
RIDGEWOOD, NJ 07450

Rev	Date	Drawn	Description	Ch'k'd	App'd

EARL C. SCHNEIDER
NJ PROFESSIONAL ENGINEER LIC. No. 39397

Project Number: **507102802**

B/O: _____ Total: _____

Designed	J. HARKINS	Eng check	S. PENDERGRASS
Drawn	J. HARKINS	Coordination	S. PENDERGRASS
Dwg check	S. PENDERGRASS	Approved	J. HARKINS
Scale at ANSI D	Status	Rev	Security
As Shown	90%	0	STD
Drawing Number	LP101		

Title
RIDGEWOOD WATER PFAS TREATMENT FACILITIES
CIVIL
AMES TREATMENT FACILITY
LANDSCAPE PLAN