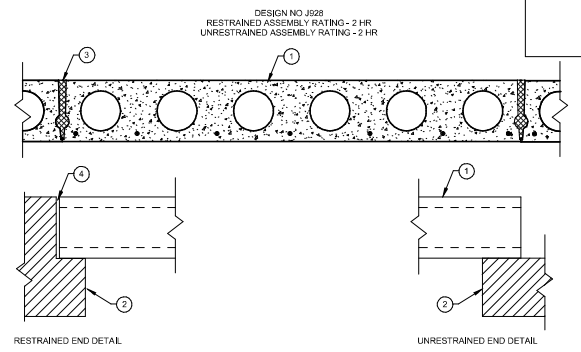


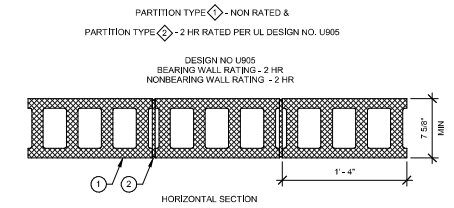
FLOOR PLAN
SCALE: 1/8" = 1'-0"



- RESTRAINED END DETAIL**
- UNRESTRAINED END DETAIL**
1. PRECAST CONCRETE UNITS — 8 IN., 10 IN. AND 12 IN. DEEP UNITS. NORMAL WEIGHT AGGREGATE. CROSS-SECTION SIMILAR TO THE ABOVE ILLUSTRATION.
 2. END DETAILS — RESTRAINED AND UNRESTRAINED. MIN BEARING 1-1/2 IN.
 3. JOINT — CLEARANCE BETWEEN SLABS AT BOTTOM, FULL LENGTH, 3/16 IN. MIN, 7/16 IN. MAX. GROUTED FULL LENGTH WITH SAND-CEMENT GROUT, 3500 PSI MIN.
NOTE: A 3/4 IN. EXPANSION JOINT IS TO BE PROVIDED THE FULL LENGTH AND DEPTH OF THE SLABS EVERY 12 FT FOR 4 FT WIDE UNITS AND EVERY 18 FT FOR 8 FT WIDE UNITS. EXPANSION SHOULD BE OBTAINED WITH NONCOMBUSTIBLE, COMPRESSIBLE MATERIAL. FOR EXAMPLE: 24 SHEETS OF 1/16-IN. THICK CERAMIC FIBER PAPER.
 4. END CLEARANCE — CLEARANCE FOR EXPANSION AT EACH END OF SLABS SHALL BE EQUAL TO (L/17) X (3/16 + OR- 1/16) IN., WHERE L IS EQUAL TO LENGTH OF SPAN IN FEET.

CONCRETE HOLLOW CORE PLANK FLOOR CEILING DETAIL

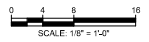
SCALE: 1 1/2" = 1'-0"



1. CONCRETE BLOCKS - VARIOUS DESIGNS. CLASSIFICATIONS D-2 (2HR). SEE CONCRETE BLOCKS CATEGORY FOR LIST OF ELIGIBLE MANUFACTURES.
2. MORTAR - BLOCKS Laid IN FULL BED OF MORTAR NOM 3/8 IN THICK OF NOT LESS THAN 2-1/4 IN AND NOT MORE THAN 3-1/2 PARTS OF CLEAN SHARP SAND TO 1 PART PORTLAND CEMENT (PROPORTIONED BY VOLUME AND NOT MORE THAN 50 PERCENT HYDRATED LIME BY CEMENT VOLUME VERTICAL JOINTS STAGGERED).

NON RATED AND 2-HR RATED WALL DETAIL

SCALE: 1 1/2" = 1'-0"



© Matt MacDonald
This document is issued for the party which commissioned it and for specific purposes connected with the captioned project only. It should not be relied upon by any other party or used for any other purpose. We accept no responsibility for the consequences of this document being relied upon by any other party, or being used for any other purpose, or containing any error or omission which is due to an error or omission in data supplied to us by other parties.

MOTT MACDONALD
111 Wood Avenue
Suite 500
Iselin, New Jersey 08830-1005
United States
T - 973-397-3400
F - 973-376-1072
www.mottmacamericas.com

Client

RIDGEWOOD WATER
131 NORTH MAPLE AVENUE
RIDGEWOOD, NJ 07450

Rev	Date	Drawn	Description	Cr/ld	App'd

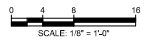
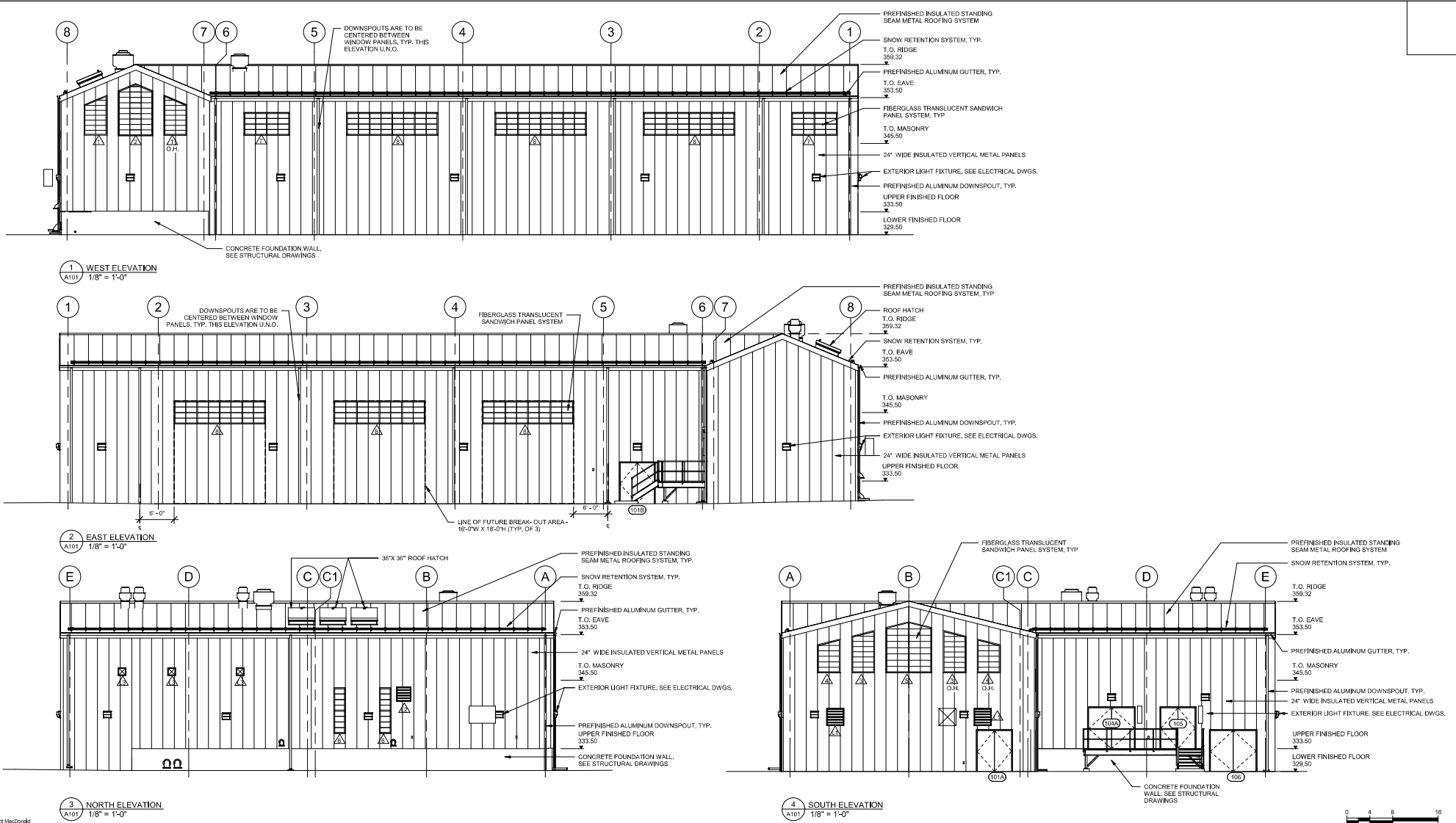
ANTHONY F. PEDRO
Professional Engineer Lic. NO. GE37905

Project Number: 507102802
B/O: 8
Total: 10

Designed	S.CASANO	Eng check	
Drawn	R.KENKARE	Coordination	
Dwg check	P.BASTARDO	Approved	
Scale	1/8" = 1'-0"	Status	60%
Drawing Number	A101	Rev	
		Security	STD

Title

RIDGEWOOD WATER PFAS TREATMENT FACILITIES CEDAR HILL TREATMENT FACILITY ARCHITECTURAL FLOOR PLAN



© Mott MacDonald
 This document is issued for the party which commissioned it and for specific purposes connected with the captioned project only. It should not be relied upon by any other party or used for any other purpose. We accept no responsibility for the consequences of this document being relied upon by any other party, or being used for any other purpose, or containing any error or omission which is due to an error or omission in data supplied to us by other parties.

M
MOTT
MACDONALD

111 Wood Avenue
 Suite 500
 Iselin, New Jersey 08830-1005
 United States

T + 973-397-3400
 F + 973-376-1072
 www.mottmacamericas.com

Client
RIDGEWOOD WATER
131 NORTH MAPLE AVENUE
RIDGEWOOD, NJ 07450

Rev	Date	Drawn	Description	Cr/ld	App'd

ANTHONY F. PEDRO
 Professional Engineer Lic. NO. GE37905

Project Number: **507102802**
 B/O: **9**
 Total: **10**

Designed	S.CASANO	Eng check	
Drawn	R.KENKARE	Coordination	
Dwg check	P.BASTARDO	Approved	
Scale	1/8"=1'-0"	Status	60%
Drawing Number	A201		
		Rev	Security
			STD

Title
RIDGEWOOD WATER PFAS TREATMENT FACILITIES CEDAR HILL TREATMENT FACILITY ARCHITECTURAL ELEVATIONS