

Update



Fall 2018 The Community Newsletter of the Township of Wyckoff

Housing for Adults with Special Needs is Coming to Wyckoff



In New Jersey, there are 8,000 special needs adults on waiting lists to move into a residential home and the demand becomes greater with each passing year. That unmet need was the driving force that has resulted in a partnership between the Township of Wyckoff and Bergen County United Way to bring special needs housing to Wyckoff. Over the last 12 years, Bergen County United Way has built 23 projects to provide homes for over 100 special needs adults.

This home, to be built on a vacant municipal lot at the intersection of Clinton and Morse in the Business Triangle, will house six special needs adults – four in a group home setting and two in two independent living studio apartments. The \$1.2 million cost is funded with \$75,000 from Wyckoff's Affordable Housing Trust Fund, \$500,000 from Bergen County Community Development's HOME program, with the balance from Bergen County United Way. Applications for prospective residents will be available on the Bergen County United Way website late in the fall of 2018.

Having special needs housing in the heart of our town better integrates these citizens into the fabric of our community where they can be safely supervised with the benefit of family and other support networks already in place.

(continued on the next page)

Fall Leaf Collection Set To Start On October 15

The 2018 Fall leaf collection is scheduled to begin on Monday, October 15. The success of this program depends on the efforts of the Wyckoff DPW, favorable weather conditions and the cooperation of Wyckoff homeowners. The information offered here will help to make the operation as efficient as possible.

The crews will begin the first round of leaf collection in District 1 on Monday, October 15. When District 1 is finished, they will continue the collection in Districts 2, 3, 4, 5, 6, 7 and 8 in that order. If you have a question about your leaf collection district, refer to the street index in the municipal calendar or at wyckoff-nj.com. Round one usually proceeds quickly and takes only 1 to 2 weeks. Due to the larger amount of leaves, the second and third rounds require more time.

A cutoff date for curbside collection will be posted on our website Home page by the end of November. Please click on wyckoff-nj.com for the cutoff date. After that date, residents must bring their leaves to the Recycling/Conservation center at 476 West Main Street for disposal or contract with a private landscaper.

State-mandated regulations

In 2004, the Township was required to adopt and enforce NJ Department of Environmental Protection rules that prohibit placing leaves in roadways or within 10 feet from any storm sewer drain.

The NJDEP mandated regulations ensure compliance with the Federal Clean Water Act. These regulations require the Township to prevent leaves and debris on roadways from entering the storm sewers, which lead to our public waterways. The NJ DEP mandated rules prohibit placing leaves:

- On the paved roadway. (Residents are responsible for instructing their landscapers about this mandate.)
- Closer than 10 feet from any storm sewer drain.

How do you know when the leaf crews will be in your district?

The Township will continue to post daily updates on the progress of the leaf collection on wyckoff-nj.com, to help residents plan to schedule their landscaper to place their leaves at the edge of their lawn just before the dates that DPW crews may be in their district. Register your email address at the [site registration link](#) and receive updates directly. Remember, Mother Nature does not allow this to be an exact science, so we ask that residents be patient.

During an average autumn leaf fall, the Township collects more than 35,000 cubic yards of leaves. That's enough to cover a football field end zone to end zone with a blanket of leaves 20 feet deep.

Important leaf collection reminders for homeowners:

- Be sure leaves are free of branches or twigs, which clog vacuum hoses and slow the collection process. If your leaves contain branches or twigs, they will not be collected.
- Rake leaves to the edge of your lawn and spread along the entire frontage.
- Leaves must be at least 10 feet from storm sewer drains.
- Residents should instruct their landscaper not to place leaves in the street.
- Do not park vehicles in the street during leaf collection.
- Do not park vehicles on leaves as the heat from the car's engine could start a fire.
- Instruct children not to play in leaves at the edge of your lawn.

Following these guidelines will help avoid delays. Residents can also help speed the process by bringing their leaves to the Recycling/Conservation Center at 476 West Main Street rather than waiting for curbside pick-up or contract with a private



Shredfest/Drug Drop Off Set

The Township of Wyckoff has scheduled a mobile paper shredding vehicle on Saturday, October 20 at the Recycling Center, 476 West Main Street, from 8:30 am to 11:00 am (rain or shine), or when the truck has reached its capacity. This is for residents who wish to bring their confidential personal paper documents and paper correspondence for shredding at no charge. Confidential personal paper documents without metal tabs are accepted, no plastic bags, no metal clips and no x-rays can be shredded.

Residents will be limited to four bags or boxes weighing no more than 10 lbs. each, on a first come, first serve basis. Residents should bring their confidential paper documents and correspondence in their own containers that they can take home and re-use for the next shredding event. Recyclable paper that is not personal paper such as magazines, travel guides, and junk mail, etc. **will not** be accepted for shredding. The vehicle will transport the shredded paper to the recycling market where it will enter the recycling stream. A video display allows residents to witness the shredding of their personal documents.

Additionally, a drug drop box will be available for residents to deposit their unused and expired medications for secure disposal by the Police Department. Please remove all identifying labels from containers. No syringes will be accepted.

Affordable Housing Applications Accepted

The Township of Wyckoff welcomes applications for affordable housing units. The Township desires to attract families/persons with qualified low and moderate incomes for possible future occupancy of new or vacated affordable housing units. Currently, there are no vacancies in any existing affordable housing units and there are no new affordable housing units under construction at this time, but this could change in the future. The Wyckoff Affordable Housing units are for persons or families of limited income. Qualified applicants may apply for purchase units and/or rental units that are designated for rental. Households that meet the income requirements based on the number of persons in a family may qualify.

Unfortunately, Wyckoff cannot guarantee the availability of affordable housing units for each certified household. Those wishing to apply for low and moderate income housing units may visit our website at www.wyckoff-nj.com and enter "Affordable Housing" in the search bar.

Housing for Special Needs Adults

(continued from the front page)

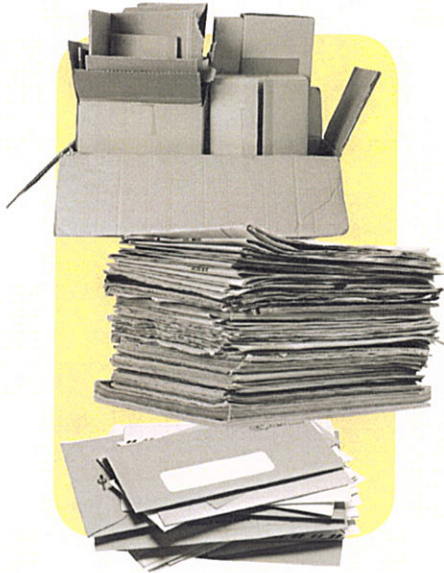
Long-time residents of Wyckoff will recognize the site of this project as the original location of Wyckoff Town Hall and our volunteer fire department. In 1953, the building was unfortunately destroyed, ironically enough, by fire. This site is doubly fitting: as our volunteer fire department assists our citizens when they are vulnerable and in need of support, so will this home. Second, it will serve as an excellent example of the good that government, in cooperation with a charity, can do.

Dual is Cool

WYCKOFF DUAL STREAM RECYCLING GUIDELINES

In order to meet the market demand of "clean recyclables" – the only recyclables that the market will accept – the Township recently switched to dual stream recycling, which requires residents to place the **two different** recycling categories at the curb on separate weeks.

Cardboard & Mixed Paper Recy-



- **Newspaper**
- **Cardboard** (flattened)
- **Mixed Paper:** junk mail, magazines, paperback books, food/beverage boxes, paper bags, catalogs, office paper, and envelopes

Use cardboard boxes, reusable bins or paper bags to hold your cardboard/newspaper/mixed paper recycling.

Paper should be dry and free of food. It should not be bound with tape, twine or rope.

No plastic bags!

All of these items are placed at the curb every other week.

Bottles, Cans and Plastics #1, 2 and 5

- **Steel & Tin Cans**
- **Glass Bottles & Jars** (no lids)
- **Aluminum Cans**
- **Plastic Bottles & Containers** #1, 2, and 5 only (no lids)

Recyclables need to be empty, rinsed clean, and dry. Items should not be bagged.

No plastic bags!

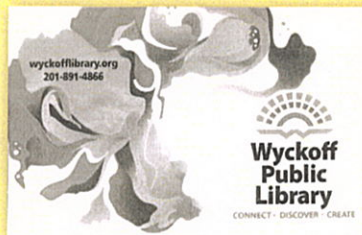


All of these items are placed at the curb every other week.

The Library is for Everyone

During the fall we celebrate one of our favorite traditions - First Grade Visits. Each Wyckoff student will receive their first library card during a visit to the library. The excitement and enthusiasm of the students as they make their selections and find a comfy spot to start reading is wonderful to witness.

The library has plenty to offer teens and adults too and it's never been easier to borrow materials from the library. Did you know that in addition to checking out books, movies, and music, you can also access our digital collections 24/7? Download ebooks, eaudiobooks and digital magazines, or stream music and movies. Access Rosetta Stone online to learn a new language or stop by the library and discover your roots using Ancestry.com.



If you haven't already, you should check out the MakerSpace! You can use a variety of tools including an Ultimaker 3D printer, Hue Animation Studio, Little Bits, sewing machine, laminator, button maker and knitting supplies in order to make, explore, and tinker. In addition to "drop in" opportunities, there are guided programs led by staff, volunteers, or expert makers on a regular basis.

Come connect, discover and create at the library. Be sure to stay connected to the library by visiting wyckofflibrary.org, joining our email list and following us on Facebook, Instagram & Twitter.

Be Storm Informed!

Do you want to know the status of power restoration efforts and receive emergency alert messages?

Visit our home page at wyckoff-nj.com and "Connect" at the bottom right of the web page.

Subscribe to e-Alerts – Sign up to receive:

Wyckoff E-News • Nixle text messages • Swift 911 emergency calls

Your "Go To" Sources for Timely & Useful Municipal Information

"Liking" these Wyckoff Facebook pages:

- Wyckoff, NJ Office of Emergency Management
- Wyckoff Police Department
- Wyckoff Local Government
- Wyckoff Recreation Department
- Wyckoff Mayor's Wellness Campaign

"Follow" us on Twitter:

- @WyckoffPolice
- @WyckoffTownship

"Follow" us on Instagram

- wyckoffnj
- wyckoff_municipal_alliance

Sign up for weekly and other special E-news on wyckoff-nj.com if you want to receive timely emergency information.

**If you do not "Connect" with us,
we cannot connect with you.**

Township of Wyckoff
Memorial Town Hall
340 Franklin Avenue
Wyckoff, NJ 07481

DATED MATERIAL


Presort STD
U. S. Postage
PAID
Permit 35
West Caldwell NJ

Postal Customer
Wyckoff, NJ 07481

Township Committee

Brian D. Scanlan, *Mayor*
Rudolf E. Boonstra
Thomas J. Madigan
Melissa D. Rubenstein
Timothy E. Shanley

Designed by Rocket Graphics, North Haledon

 Printed on recycled paper,
with post consumer content

**MORE AMERICANS DIE
EVERY DAY FROM DRUG
OVERDOSES THAN
FROM CAR CRASHES.**

Please be sure to secure your
prescription medications and
properly dispose of expired
medicine.

**WYCKOFF
PROUD TO BE
STIGMA-FREE**



Wet garbage weighs more and
therefore costs more to landfill.
Keep lids on your receptacles at
the curb and near your home or garage.
Avoid placing mattresses, rugs, or up-
holstered furniture at the curb in rainy or
snowy weather. If you are installing carpet,
ask your installer to take the old carpet
away with them. Remember to keep a lid
on your containers for recyclables so they
do not get blown around on windy days.

