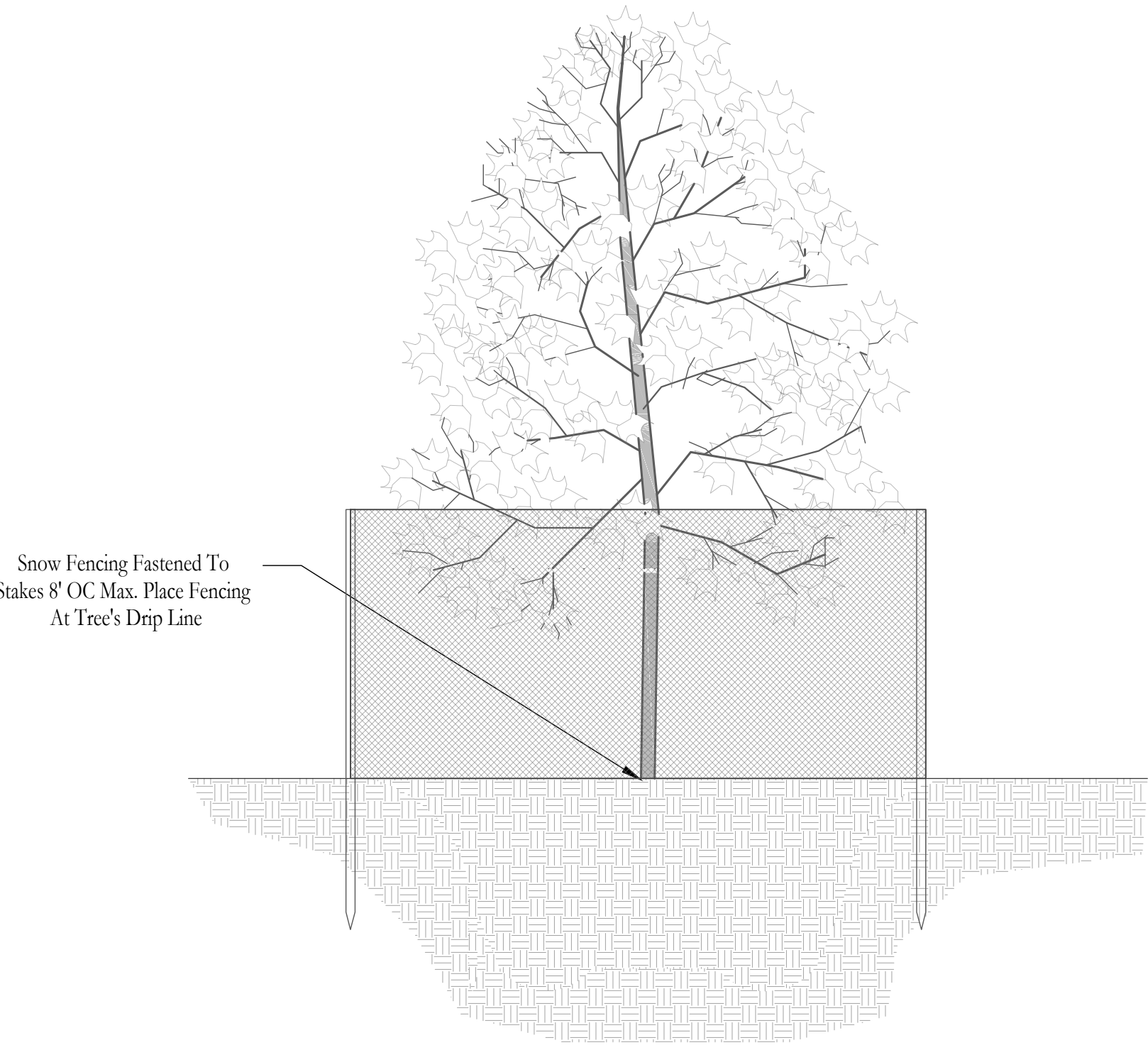


**Tree Preservation Plan Key**

- Ex. Tree Typ.
- Tree Protection Fencing



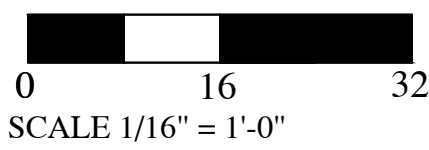
- Tree Preservation Notes**
- No Material Storage Within Boundary of Tree Protection Fencing
  - Do Not Dispose Any Materials Within Fencing
  - Fencing To Be Installed Prior To And Maintained Throughout Construction
  - Fencing To Be Installed Around Trees Noted On Plan

**2**  
**L101** Tree Protection Detail

**Tree Preservation Plan**  
**421 Cornwall Ct.**  
**Wyckoff, NJ**



**DRAWN BY:** Adam Howell LLA AS001239  
**DRAWING APPROVED BY:** \_\_\_\_\_  
July 7, 2021



**DRAWING #**  
**L-101**  
**SHEET 1 OF 2**

**Note - No Trees To Be Removed  
During Construction**

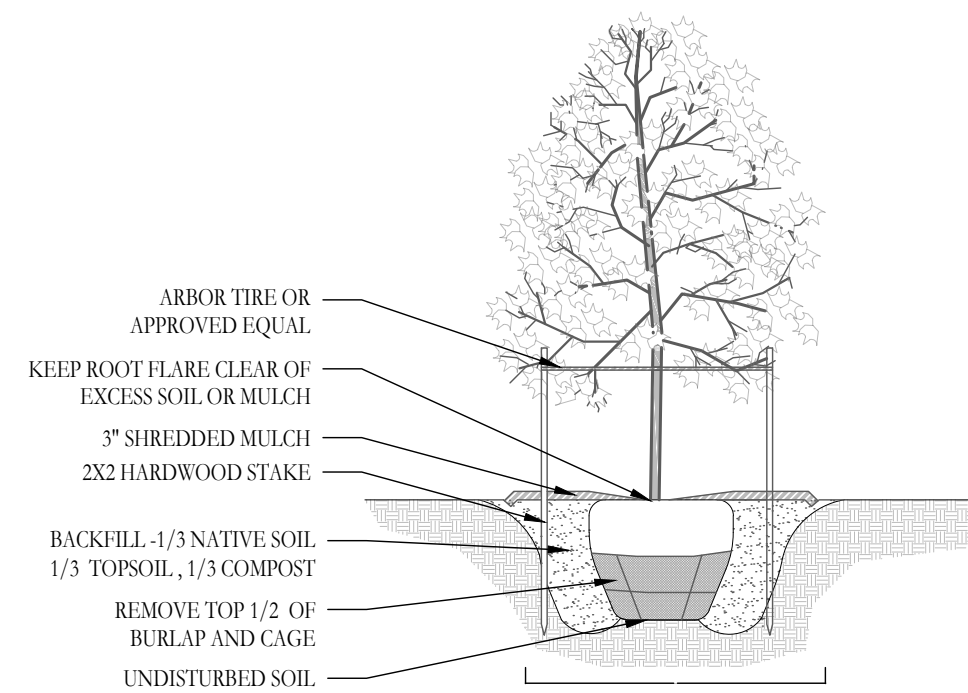
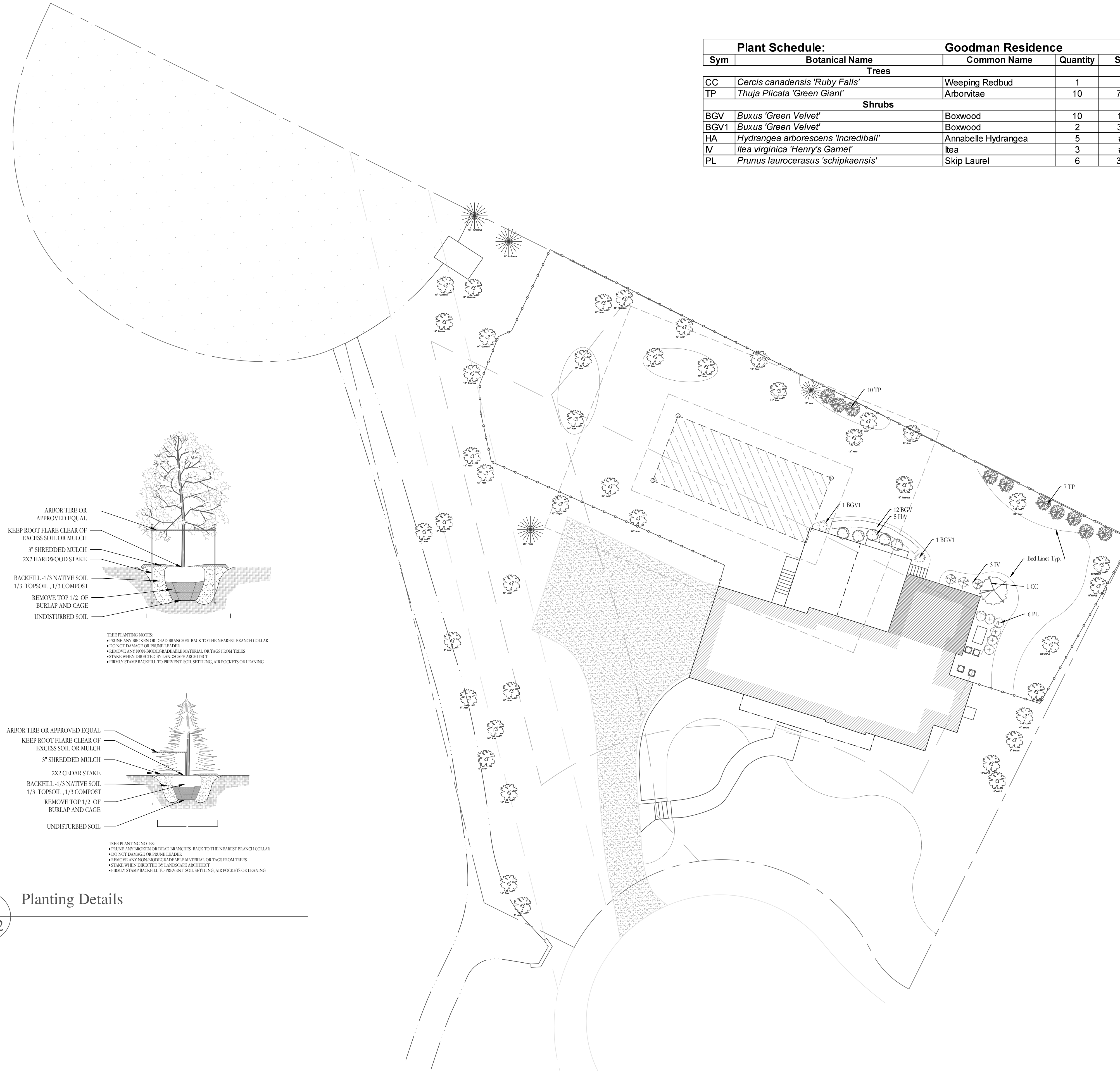
**1**  
**L101** Existing Conditions and Tree Preservation Plan

Plant Schedule:		Goodman Residence		
Sym	Botanical Name	Common Name	Quantity	Size
<b>Trees</b>				
CC	<i>Cercis canadensis 'Ruby Falls'</i>	Weeping Redbud	1	8'
TP	<i>Thuja plicata 'Green Giant'</i>	Arborvitae	10	7-8'
<b>Shrubs</b>				
BGV	<i>Buxus 'Green Velvet'</i>	Boxwood	10	18"
BGV1	<i>Buxus 'Green Velvet'</i>	Boxwood	2	30"
HA	<i>Hydrangea arborescens 'Incrediball'</i>	Annabelle Hydrangea	5	#3
IV	<i>Itea virginica 'Henry's Garnet'</i>	Itea	3	#3
PL	<i>Prunus laurocerasus 'schipkaensis'</i>	Skip Laurel	6	3-4'

- PLANTING NOTES:**
- ALL PLANT MATERIAL SHALL BE LAID OUT AND APPROVED PRIOR TO PLANTING
  - INSTALL A MINIMUM OF 12" OF TOPSOIL IN ALL PLANTED AREAS AND A MINIMUM OF 6" IN ALL TURF AREAS.
  - ORGANIC CONTENT FOR BEDS SHALL BE 6-10%, FOR LAWN AREAS 4-6%
  - SOIL TEXTURE SHALL FALL UNDER THE USDA'S CLASSIFICATION FOR LOAM, SANDY CLAY LOAM OR SANDY LOAM, CLAY CONTENT NOT TO EXCEED 25%
  - PH BETWEEN 5.5-7
  - SOLUBLE SALTS NO MORE THAN 2MMHO/CM
  - ALL PLANT MATERIAL SHALL BE OF QUALITY NURSERY STOCK AS DEFINED BY THE AMERICAN ASSOCIATION OF NURSERY STANDARDS AND SHALL BE FREE OF DISEASE AND OBJECTIONAL DEFECTS.
  - CONTRACTOR IS RESPONSIBLE TO VERIFY UTILITY LOCATION PRIOR TO PLANTING
  - ALL NON-BIO-DEGRADABLE ROOT WRAPPING TO BE REMOVED COMPLETELY BEFORE PLANTING
  - ALL TREES SHALL BE BALLED AND BURLAPED, NURSERY GROWN STOCK
  - ALL PLANT MATERIAL AND LAWNS SHALL BE INSTALLED WITHIN THE RECOMMENDED SEASONAL TIME PERIOD. THE RECOMMENDED TIME FRAME FOR SPRING IS APRIL THROUGH MAY AND LATE AUG TO LATE OCTOBER FOR FALL.
  - FALL PLANTING HAZARD TREES SHALL ONLY BE DUG AND PLANTED IN THE SPRING.
  - PROPOSED PLANT MATERIAL MAY BE SUBSTITUTED ONLY WHEN APPROVED BY LANDSCAPE ARCHITECT.
  - ALL PLANT MATERIAL SHALL BE MULCHED WITH 3" OF SHREDDED HARDWOOD MULCH. INDIVIDUAL TREES SHALL RECEIVE A MULCH RING. GROUPED PLANT MATERIAL SHALL BE MULCHED CONTINUOUSLY.
  - ALL DEBRIS FROM THE INSTALLATION SHALL BE REMOVED OFF SITE. ALL CONTAINERS ARE TO BE RECYCLED WHEN POSSIBLE.
  - TO PREVENT PEDESTRIAN CONFLICTS ALL STREET TREES SHALL BE LIMED UP TO 7'
  - ANY TREE STAKING IS TO BE DONE AT THE DISCRETION OF THE LANDSCAPE ARCHITECT. ALL STAKING MUST BE REMOVED BY THE CONTRACTOR AFTER THE GUARANTEE PERIOD.
  - ALL PLANT MATERIAL SHALL BE GUARANTEED FOR A PERIOD OF 1 YEAR AFTER THE OWNER'S ACCEPTANCE OF THE PROJECT
  - NO PLANT MATERIAL SHALL BE PLANTED IN DRIVEWAY SIGHT TRIANGLES OR EASEMENTS
  - ALL PLANT MATERIAL SHALL BE WATERED AT THE TIME OF INSTALLATION. REGULAR WATERING SHALL BE PERFORMED BY THE CONTRACTOR TO HELP ESTABLISH HEALTHY PLANT MATERIAL.

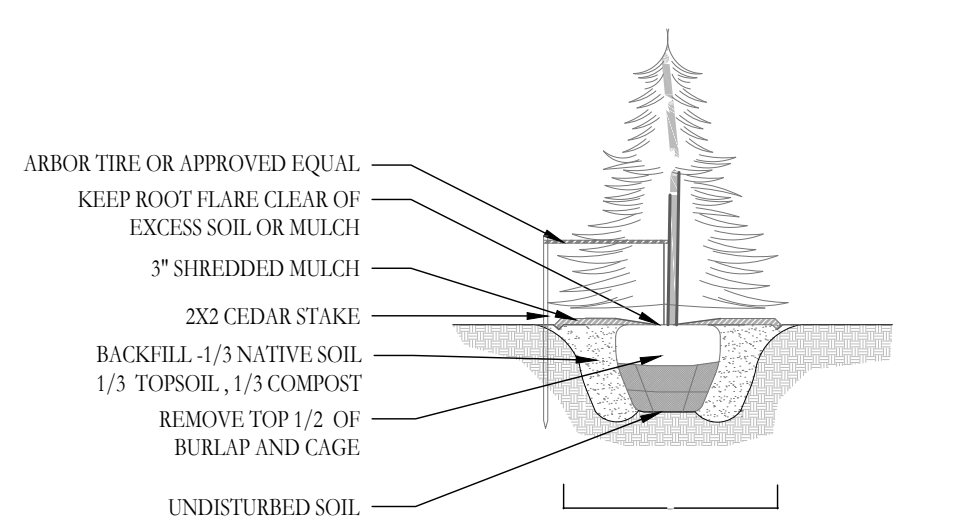
- SEEDING NOTES:**
- ALL AREAS DISTURBED BY CONSTRUCTION SHALL BE STABILIZED PRIOR TO THE OWNER'S ACCEPTANCE.
  - ALL TURF AREAS SHALL BE UNIFORMLY GRADED AND FREE OF DEBRIS AND ROCKS.
  - KEEP ALL SEEDED AREAS IRRIGATED UNTIL THEY REACH 75% COVERAGE. RE-SEED AREAS THAT DO NOT FULFILL THIS REQUIREMENT
  - SEEDED AREAS SHALL BE COVERED WITH WEED FREE STRAW, PENN MULCH OR APPROVED EQUAL
  - ALL SLOPES GREATER THAN 4:1 OR AREAS THAT ARE PRONE TO EROSION SHALL BE STABILIZED WITH HYDRO-TACK, BIODEGRADABLE STABILIZATION NETTING OR APPROVED EQUAL.

- MAINTENANCE NOTES**
- CONTRACTOR IS RESPONSIBLE FOR THE MAINTENANCE OF THE NEWLY INSTALLED PLANT MATERIAL AND TURF DURING THE GUARANTEE PERIOD.
  - ALL PLANTS SHALL BE WATERED IF NO IRRIGATION IS PRESENT TO ENSURE THE PLANT'S HEALTH
  - ALL TURF SHALL BE MOWED AND IS NOT TO EXCEED 4" IN HEIGHT
  - MULCH SHOULD BE UNIFORM AND MAINTAINED AT A DEPTH OF 3"
  - ALL BEDS SHALL BE MAINTAINED FREE OF WEEDS. A PRE-EMERGENT WEED CONTROL MAY BE USED ON THE TURF AND IN THE BED AREAS. GLYPHOSATE BASED WEED CONTROL IS NOT TO BE USED



**TREE PLANTING NOTES:**

- PRUNE ANY BROKEN OR DEAD BRANCHES BACK TO THE NEAREST BRANCH COLLAR
- DO NOT DAMAGE OR PRUNE LEADER
- REMOVE ANY NON-BIODEGRADABLE MATERIAL OR TAGS FROM TREES
- STAKE WHEN DIRECTED BY LANDSCAPE ARCHITECT
- FIRMLY STAMP BACKFILL TO PREVENT SOIL SETTLING, AIR POCKETS OR LEANING



**TREE PLANTING NOTES:**

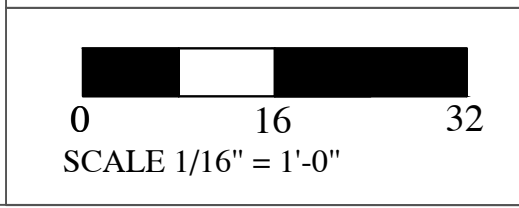
- PRUNE ANY BROKEN OR DEAD BRANCHES BACK TO THE NEAREST BRANCH COLLAR
- DO NOT DAMAGE OR PRUNE LEADER
- REMOVE ANY NON-BIODEGRADABLE MATERIAL OR TAGS FROM TREES
- STAKE WHEN DIRECTED BY LANDSCAPE ARCHITECT
- FIRMLY STAMP BACKFILL TO PREVENT SOIL SETTLING, AIR POCKETS OR LEANING

2  
L102  
Planting Details

**Planting Plan**  
421 Cornwall Ct.  
Wyckoff, NJ



**DRAWN BY:** Adam Howell LLA AS001239  
**DRAWING APPROVED BY:** \_\_\_\_\_  
July 7, 2021



**DRAWING #**  
**L-102**  
**SHEET 2 OF 2**

1  
L102  
Planting Plan