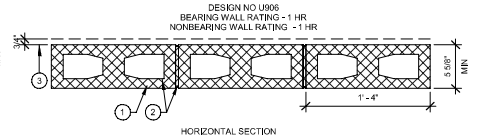


1. CONCRETE BLOCKS - VARIOUS DESIGNS, CLASSIFICATIONS D-2 (2HR). SEE CONCRETE BLOCKS CATEGORY FOR LIST OF ELIGIBLE MANUFACTURERS.
2. MORTAR - BLOCKS LAID IN FULL BED OF MORTAR NOM 3/8 IN THICK OF NOT LESS THAN 2-1/4 AND NOT MORE THAN 3-1/2 PARTS OF CLEAN SHARP SAND TO 1 PART PORTLAND CEMENT (PROPORTIONED BY VOLUME AND NOT MORE THAN 50 PERCENT HYDRATED LIME BY CEMENT VOLUME) VERTICAL JOINTS STAGGERED

*BEARING THE UL CLASSIFICATION MARKING

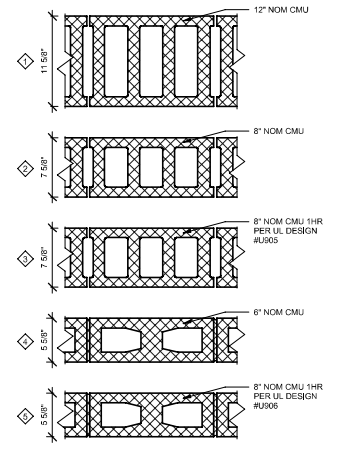
1-1/2" FIRE RATED MASONRY WALL DETAILS
A101 1 1/2" = 1'-0"



1. CONCRETE BLOCKS - NOMINAL 6" X 8" X 16", HOLLOW OR SOLID, VARIOUS DESIGNS, CLASSIFICATION (2HR). SEE CONCRETE BLOCKS CATEGORY FOR LIST OF ELIGIBLE MANUFACTURERS.
2. MORTAR - BLOCKS LAID IN FULL BED OF MORTAR, NOM. 3/8" THICK, OF NOT LESS THAN 2-1/4 AND NOT MORE THAN 3-1/2 PARTS OF CLEAN SHARP SAND TO 1 PART PORTLAND CEMENT (PROPORTIONED BY VOLUME) AND NOT MORE THAN 50 PERCENT HYDRATED LIME (BY CEMENT VOLUME). VERTICAL JOINTS STAGGERED
3. PORTLAND CEMENT STUCCO OR GYPSUM PLASTER - ADD 1/2HR TO CLASSIFICATION IF USED. ATTACHED TO CONCRETE BLOCKS (ITEM 1).

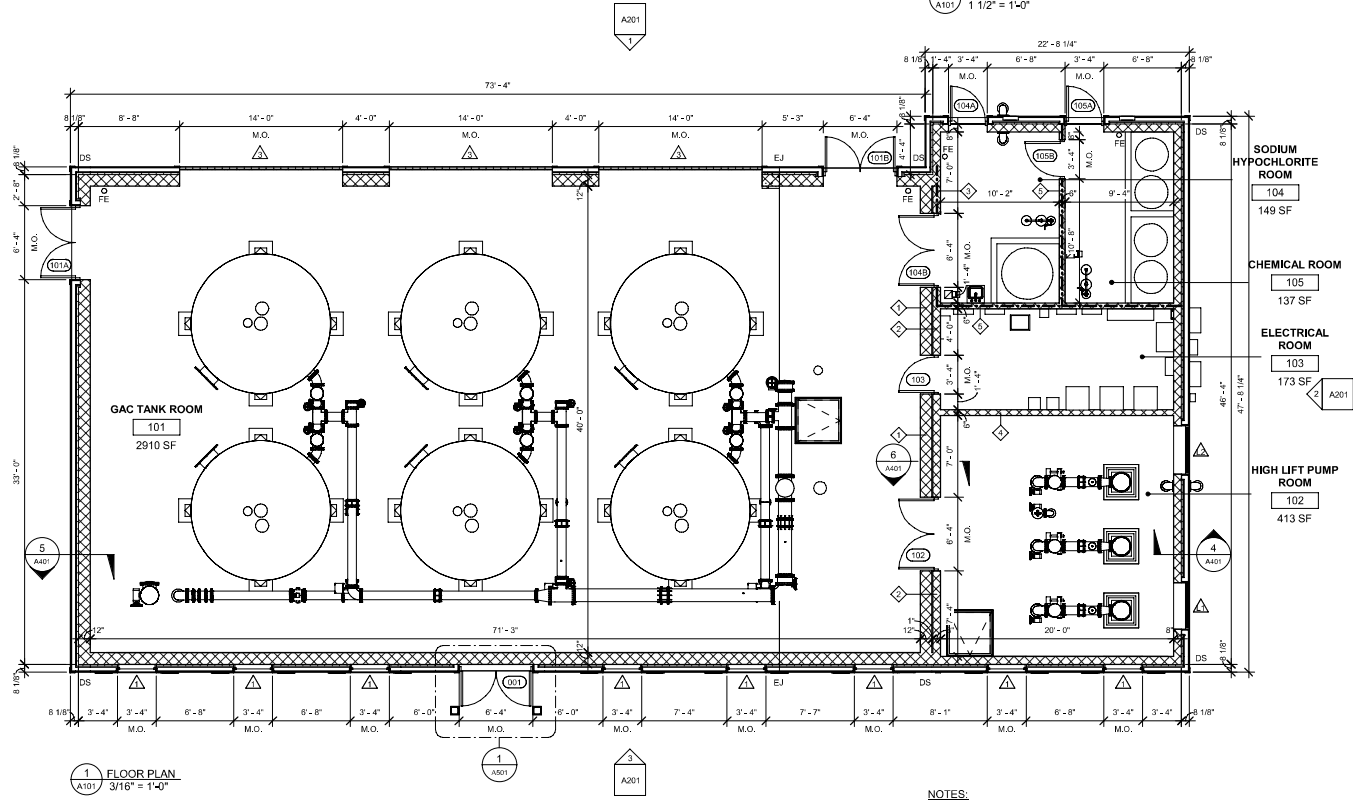
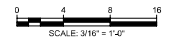
*INDICATES SUCH PRODUCTS SHALL BEAR THE UL OR ULQ CERTIFICATION MARK

PARTITION TYPES



LEGEND

- (XX) DOOR NUMBER
- (FE) FIRE EXTINGUISHER
- (O) UL RATED 2A10BC FIRE EXTINGUISHERS MOUNTED ON WALL OR STRUCTURE PER NFPA 10
- (---) 1-HR RATED FIRE BARRIER WALL
- (---) 8" CMU WALL - UL DESIGN NO. U905
- (---) 6" CMU WALL - UL DESIGN NO. U906
- (---) CMU WALL
- (DS) 3"x4" RECTANGULAR PREFINISHED ALUM DOWNSPOUT
- (△) WINDOW TAG, SEE SHEET A601 FOR WINDOW TYPES.
- (◇) PARTITION TYPES



1 FLOOR PLAN
A101 3/16" = 1'-0"

NOTES:

1. DIMENSIONS ARE TO FACE OF MASONRY WALL OR FACE OF METAL STUD

© Matt MacDonald
This document is issued for the party which commissioned it and for specific purposes connected with the captioned project only. It should not be relied upon by any other party or used for any other purpose. We accept no responsibility for the consequences of this document being relied upon by any other party, or being used for any other purpose, or containing any error or omission which is due to an error or omission in data supplied to us by other parties.

MOTT MACDONALD
111 Wood Avenue
Suite 500
Iselin, New Jersey 08830-1005
United States
T - + 973-392-3400
F - + 973-376-1072
www.mottmac.com

Client
RIDGEWOOD WATER
131 NORTH MAPLE AVENUE
RIDGEWOOD, NJ 07450

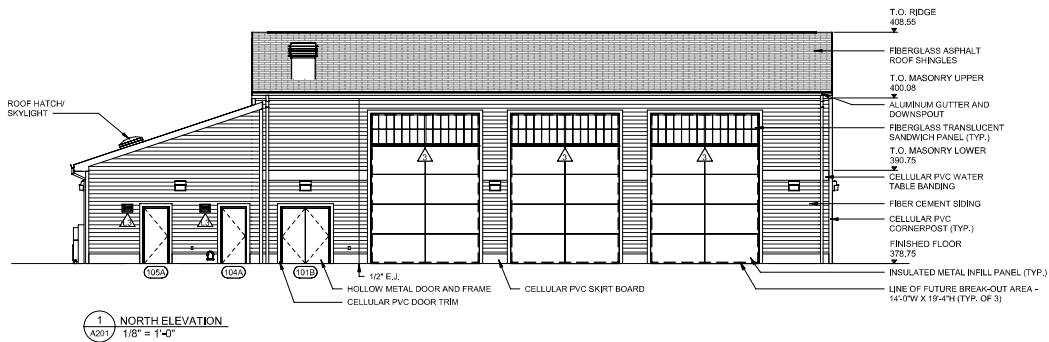
Rev	Date	Drawn	Description	Chk'd	App'd

ANTHONY F. PEDRO
Professional Engineer Lic. NO. 37905

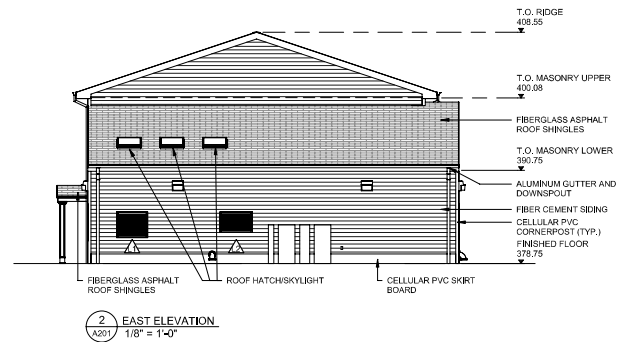


Designed	S.CASANO	Eng check	
Drawn	R.WJJCHECHOWSKI	Coordination	
Dwg check	P.BASTARDO	Approved	
Scale	3/16" = 1'-0"	Status	90%
Drawing Number	A101	Rev	
		Security	STD

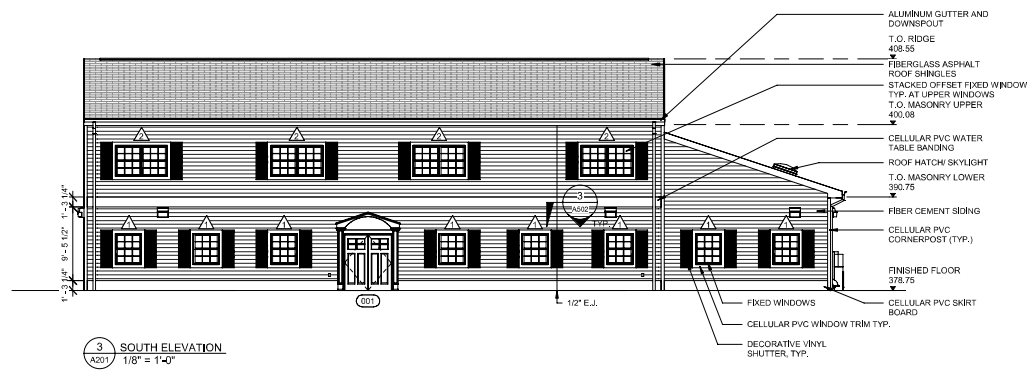
Title
RIDGEWOOD WATER PFAS
TREATMENT FACILITIES
ARCHITECTURAL
AMES TF
FLOOR PLAN



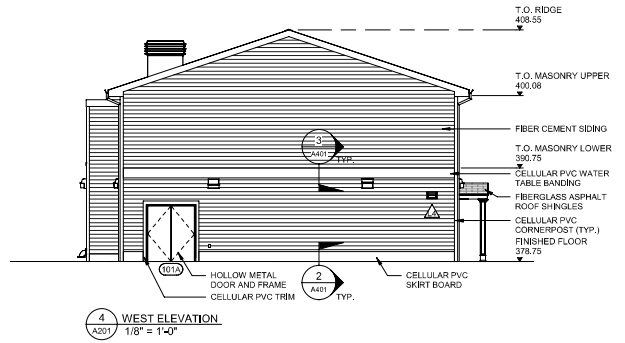
1 NORTH ELEVATION
A201 1/8" = 1'-0"



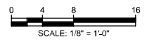
2 EAST ELEVATION
A201 1/8" = 1'-0"



3 SOUTH ELEVATION
A201 1/8" = 1'-0"



4 WEST ELEVATION
A201 1/8" = 1'-0"



© Mott MacDonald
This document is issued for the party which commissioned it and for specific purposes connected with the captioned project only. It should not be relied upon by any other party or used for any other purpose. We accept no responsibility for the consequences of this document being relied upon by any other party, or being used for any other purpose, or containing any error or omission which is due to an error or omission in data supplied to us by other parties.

MOTT MACDONALD
111 Wood Avenue
Suite 500
Iselin, New Jersey 08830-1005
United States
T - + 973-392-3400
F - + 973-376-1072
www.mottmacamericas.com

Client
RIDGEWOOD WATER
131 NORTH MAPLE AVENUE
RIDGEWOOD, NJ 07450

Rev	Date	Drawn	Description	Chk'd	App'd

ANTHONY F. PEDRO
Professional Engineer Lic. No. 37905



Designed	S.CASANO	Eng check	
Drawn	R.WOJCIECHOWSKI	Coordination	
Dwg check	P.BASTARDO	Approved	
Scale	1/8" = 1'-0"	Status	90%
Drawing Number	A201	Rev	
		Security	STD

Title
RIDGEWOOD WATER PFAS
TREATMET FACILITIES
ARCHITECTURAL
AMES TF
ELEVATIONS