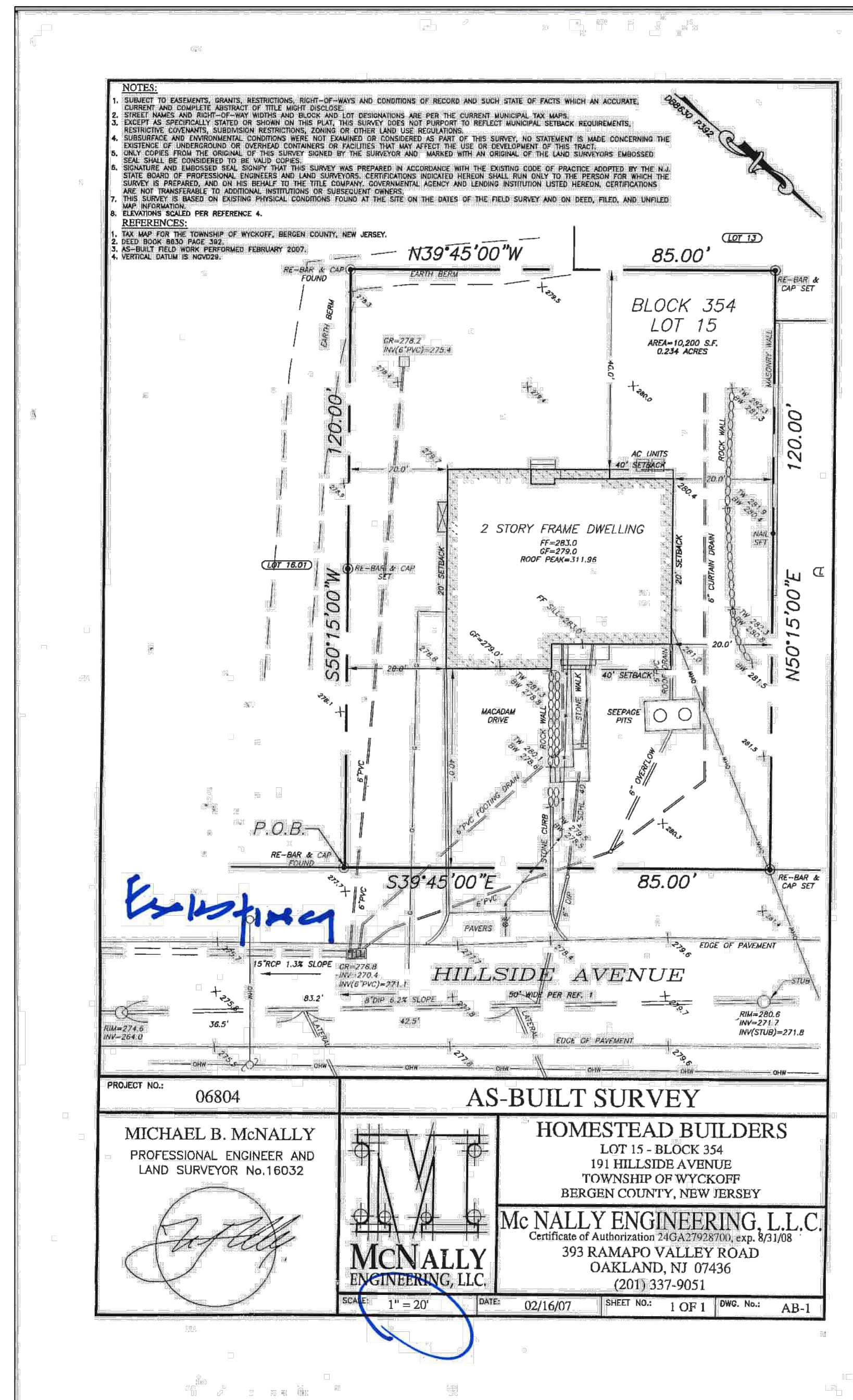
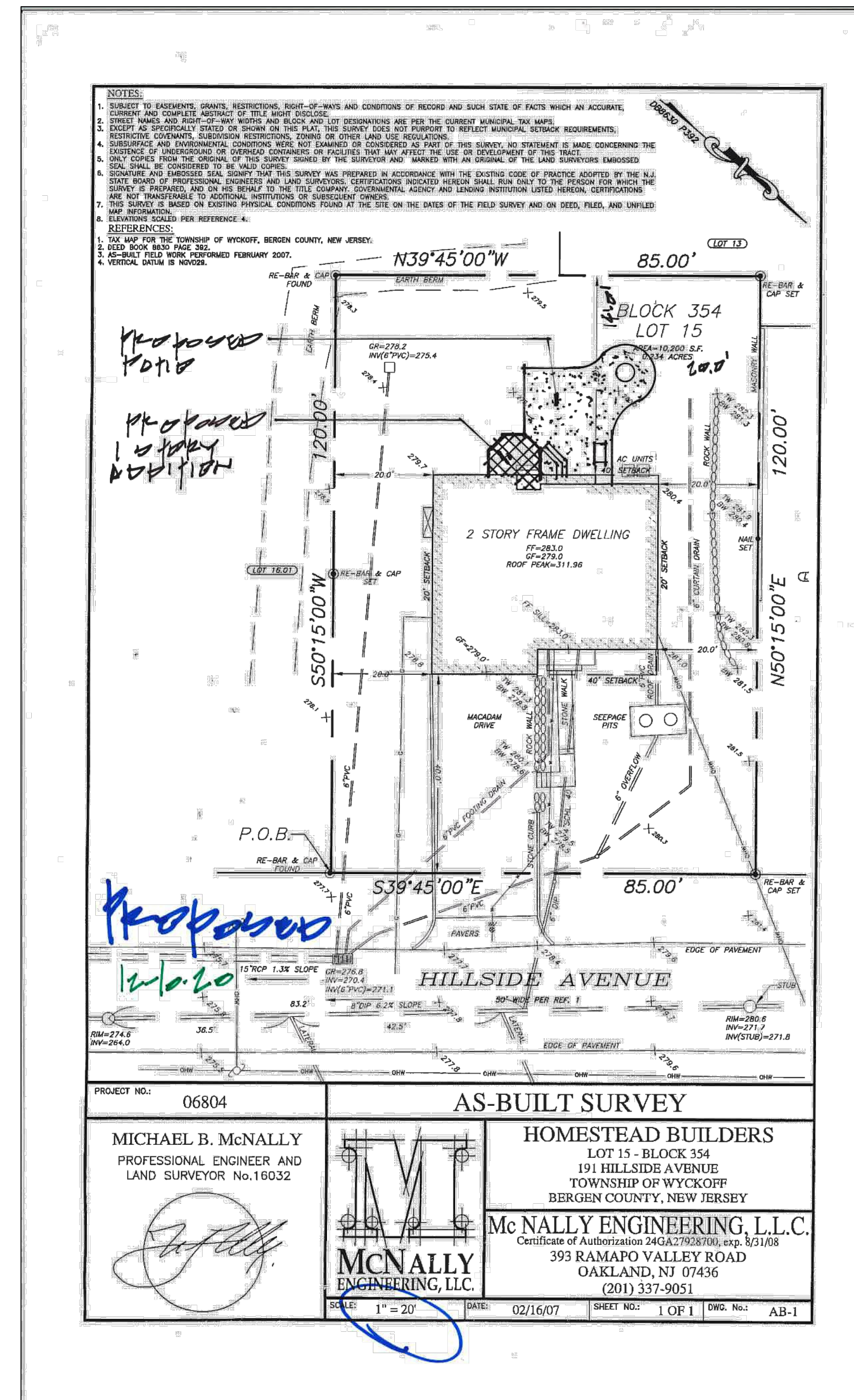


ALTERATION TO RESIDENCE OF: MR & MRS. MESSINA, 191 HILLSIDE AVE, WYCKOFF, NEW JERSEY

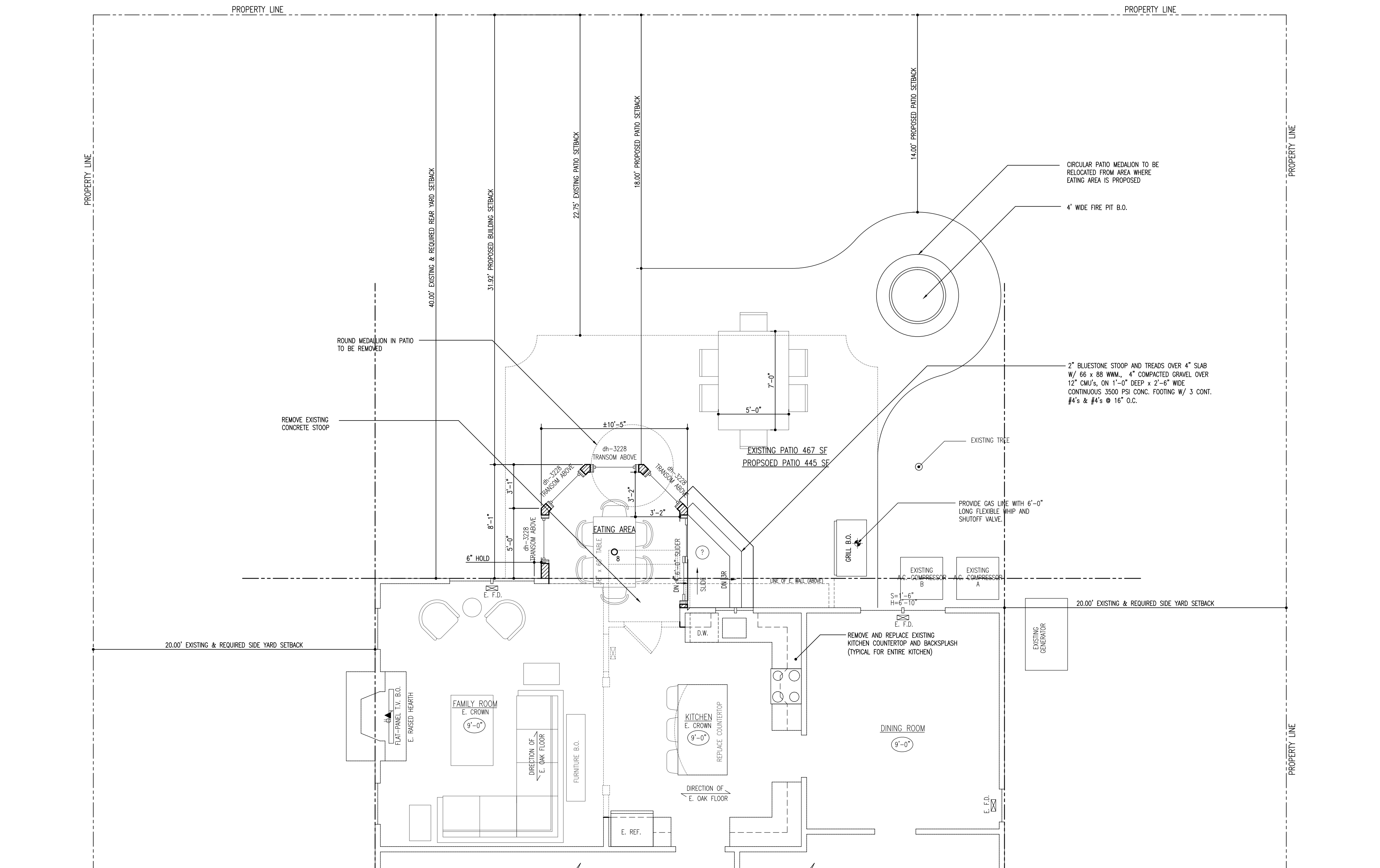


EXISTING SITE PLAN
SCALE: 1" = 20'-0"



PROPOSED SITE PLAN
SCALE: 1" = 20'-0"

KLESSE FORBES ARCHITECTS 38 CHATHAM ROAD, SHORT HILLS, NEW JERSEY BOA-1



PARTIAL FIRST FLOOR PLAN

GENERAL NOTES:
1. 91 SF ADDITION



KLESSE FORBES ARCHITECTS
38 CHATHAM ROAD
SHORT HILLS, NEW JERSEY 07078
PHONE (973) 379-6802
KLESSE.COM

TIMOTHY P. KLESSE, AIA, ASID
NJ 09204 NY 027863
ROBERT W. FORBES, AIA, LEED AP
NJ 21A101962600

ALTERATIONS TO RESIDENCE OF:
Mr & Mrs. Messina
191 Hillside Ave
Wyckoff, NJ 07481

LIGHTING LEGEND

- 1 4" LIGHTOLIER LYTECASTER LED LAR DOWNLIGHT (WET) 650 LUMENS, 90 CRI, 3000K, OPEN DOWNLIGHT, WHITE
- 2 5" LIGHTOLIER LYTECASTER LED LSR DOWNLIGHT (WET) 1000 LUMENS, 90 CRI, 3000K, OPEN DOWNLIGHT, WHITE
- 3 4" LIGHTOLIER LYTECASTER LED LARADU DOWNLIGHT 650 LUMENS, 90 CRI, 3000K, OPEN DOWNLIGHT, WHITE
- 4 5" LIGHTOLIER LYTECASTER LED LSRADU DOWNLIGHT 1000 LUMENS, 90 CRI, 3000K, OPEN DOWNLIGHT, WHITE
- 5 4" LIGHTOLIER LYTECASTER LED LAS DOWNLIGHT (WET) 650 LUMENS, 90 CRI, 3000K, OPEN DOWNLIGHT, WHITE
- 6 5" LIGHTOLIER LYTECASTER LED LSS DOWNLIGHT (WET) 1000 LUMENS, 90 CRI, 3000K, OPEN DOWNLIGHT, WHITE
- 7 WALL FIXTURE (FURNISHED B.O.)
- 8 DECORATIVE FIXTURE (FURNISHED B.O.)
- 9 NUTONE QTEN110S (FAN)
- 10 CALCULITE LED 3" EVOLUTION BY LIGHTOLIER LIGHT ENGINE: C3L085A0127K9NF TRIM: C3LAWHW
- 11 JUNO PRO-LED UPL30-WH (CLOSET LIGHT)
- 12 PULL CHAIN FIXTURE
- 13 LITHONIA LIGHTING, UCLO SERIES, LED CABINET LIGHT MAXIMUM SIZE TO FIT UNDER INDICATED CABINET (12", 18", 24")
- 14 LOW-VOLTAGE LIGHT COPPERMOON CM.830 ANTIQUE BRASS FINISH (800-727-5483)
- 15 LOW-VOLTAGE LIGHT COPPERMOON CM.865 ANTIQUE BRASS FINISH (800-727-5483)
- 16 4" LED STRIP LIGHT
- 17 HEATH ZENITH 240-DEGREE OUTDOOR MOTION-SENSING SECURITY LIGHT

LEGEND OF CONSTRUCTION

- EXIST. PARTITION TO REMAIN
- EXIST. PARTITION TO BE REMOVED
- NEW PARTITION
- NEW 2 x 6 PARTITION
- NEW 42" HIGH PARTITION
- NEW INTERIOR BEARING PARTITION
- BRICK / STONE
- 4 x 4 POST PROVIDE SOLID
- 4 x 6 POST BLACKING AS REQUIRED
- POST ABOVE
- ARCHED OPENING
- BEDROOM #1 ROOM NAME
- (X) FLOOR/PLUMBING (SEE SPEC.)
- (8'-0") CEILING/WALL HEIGHT
- (2'-5") CEILING/WALL HEIGHT @ POINT
- BEAM CONFIGURATIONS:
FLUSH RECESSED SEMI-RECESSED DROPPED

All structure as indicated on plans is for floor above
This document, and the ideas and designs incorporated herein, as an instrument of professional service, is the property of Klesse Associates P.A. and is not to be used in whole or in part without the written authorization of Klesse Associates P.A.

NO.	REVISION	DATE

DRAWING TITLE:
PARTIAL FIRST AND SECOND FLOOR PLAN & PARTIAL RIGHT SIDE ELEVATION

IF THIS LINE MEASURES 3" DRAWING IS AT FULL SCALE
IF THIS LINE MEASURES 1-1/2" DRAWING IS AT 1/2 SCALE
DATE:
12/11/2020

SCALE:
1/4" = 1'-0"
SEE GRAPHIC SCALE ABOVE

DRAWN BY:
RM/RF

CHECKED BY:
TK

DRAWING NUMBER
BOA-2
PROJECT NO 20048 SHEET 2 OF 3
MESSINA

KLESSE FORBES

KLESSE FORBES ARCHITECTS
38 CHATHAM ROAD
SHORT HILLS, NEW JERSEY 07078
PHONE (973) 379-6802
KLESSE.COM

TIMOTHY P. KLESSE, AIA, ASID
NJ 09204 NY 027863

ROBERT W. FORBES, AIA, LEED AP
NJ 21A101962600

ALTERATIONS TO RESIDENCE OF:
Mr & Mrs. Messina
191 Hillside Ave
Wyckoff, NJ 07481

LIGHTING LEGEND

- 1 4" LIGHTOLIER LYTECASTER LED LAR DOWNLIGHT (WET) 650 LUMENS, 90 CRI, 3000K, OPEN DOWNLIGHT, WHITE
- 2 5" LIGHTOLIER LYTECASTER LED LSR DOWNLIGHT (WET) 1000 LUMENS, 90 CRI, 3000K, OPEN DOWNLIGHT, WHITE
- 3 4" LIGHTOLIER LYTECASTER LED LARADU DOWNLIGHT 650 LUMENS, 90 CRI, 3000K, OPEN DOWNLIGHT, WHITE
- 4 5" LIGHTOLIER LYTECASTER LED LSRADU DOWNLIGHT 1000 LUMENS, 90 CRI, 3000K, OPEN DOWNLIGHT, WHITE
- 5 4" LIGHTOLIER LYTECASTER LED LAS DOWNLIGHT (WET) 650 LUMENS, 90 CRI, 3000K, OPEN DOWNLIGHT, WHITE
- 6 5" LIGHTOLIER LYTECASTER LED LSS DOWNLIGHT (WET) 1000 LUMENS, 90 CRI, 3000K, OPEN DOWNLIGHT, WHITE
- 7 WALL FIXTURE (FURNISHED B.O.)
- 8 DECORATIVE FIXTURE (FURNISHED B.O.)
- 9 NUTONE QTEN110S (FAN)
- 10 CALCULITE LED 3" EVOLUTION BY LIGHTOLIER LIGHT ENGINE: C3L085A0127K9NF TRIMC3LAWHW
- 11 JUNO PRO-LED UPL30-WH (CLOSET LIGHT)
- 12 PULL CHAIN FIXTURE
- 13 LITHONIA LIGHTING, UCLD SERIES, LED CABINET LIGHT MAXIMUM SIZE TO FIT UNDER INDICATED CABINET (12", 18", 24")
- 14 LOW-VOLTAGE LIGHT COPPERMOON CM830 ANTIQUE BRASS FINISH (800-727-5483)
- 15 LOW-VOLTAGE LIGHT COPPERMOON CM865 ANTIQUE BRASS FINISH (800-727-5483)
- 16 4" LED STRIP LIGHT
- 17 HEATH ZENITH 240-DEGREE OUTDOOR MOTION-SENSING SECURITY LIGHT

LEGEND OF CONSTRUCTION

- EXIST. PARTITION TO REMAIN
- EXIST. PARTITION TO BE REMOVED
- NEW PARTITION
- NEW 2 x 6 PARTITION
- NEW 42" HIGH PARTITION
- NEW INTERIOR BEARING PARTITION
- BRICK / STONE
- 4 x 4 POST PROVIDE SOLID
- 4 x 6 POST BLACKING AS REQUIRED
- POST ABOVE
- ARCHED OPENING

- BEDROOM #1 ROOM NAME
 (X) FLOOR/PLUMBING (SEE SPEC.)
 (8'-0") CEILING/WALL HEIGHT
 (2'-5") CEILING/WALL HEIGHT @ POINT

- BEAM CONFIGURATIONS:
 FLUSH RECESSED SEMI-RECESSED DROPPED

All structure as indicated on plans is for floor above
 This document, and the ideas and designs incorporated herein, as an instrument of professional service, is the property of Klesse Associates P.A. and is not to be used in whole or in part without the written authorization of Klesse Associates P.A.

NO.	REVISION	DATE

DRAWING TITLE:
PARTIAL REAR ELEVATION & PARTIAL LEFT SIDE ELEVATION

IF THIS LINE MEASURES 3" DRAWING IS AT FULL SCALE
 IF THIS LINE MEASURES 1-1/2" DRAWING IS AT 1/2 SCALE
 DATE: 12/11/2020

SCALE:
1/4" = 1'-0"
SEE GRAPHIC SCALE ABOVE

DRAWN BY:
RM/RF
 CHECKED BY:
TK

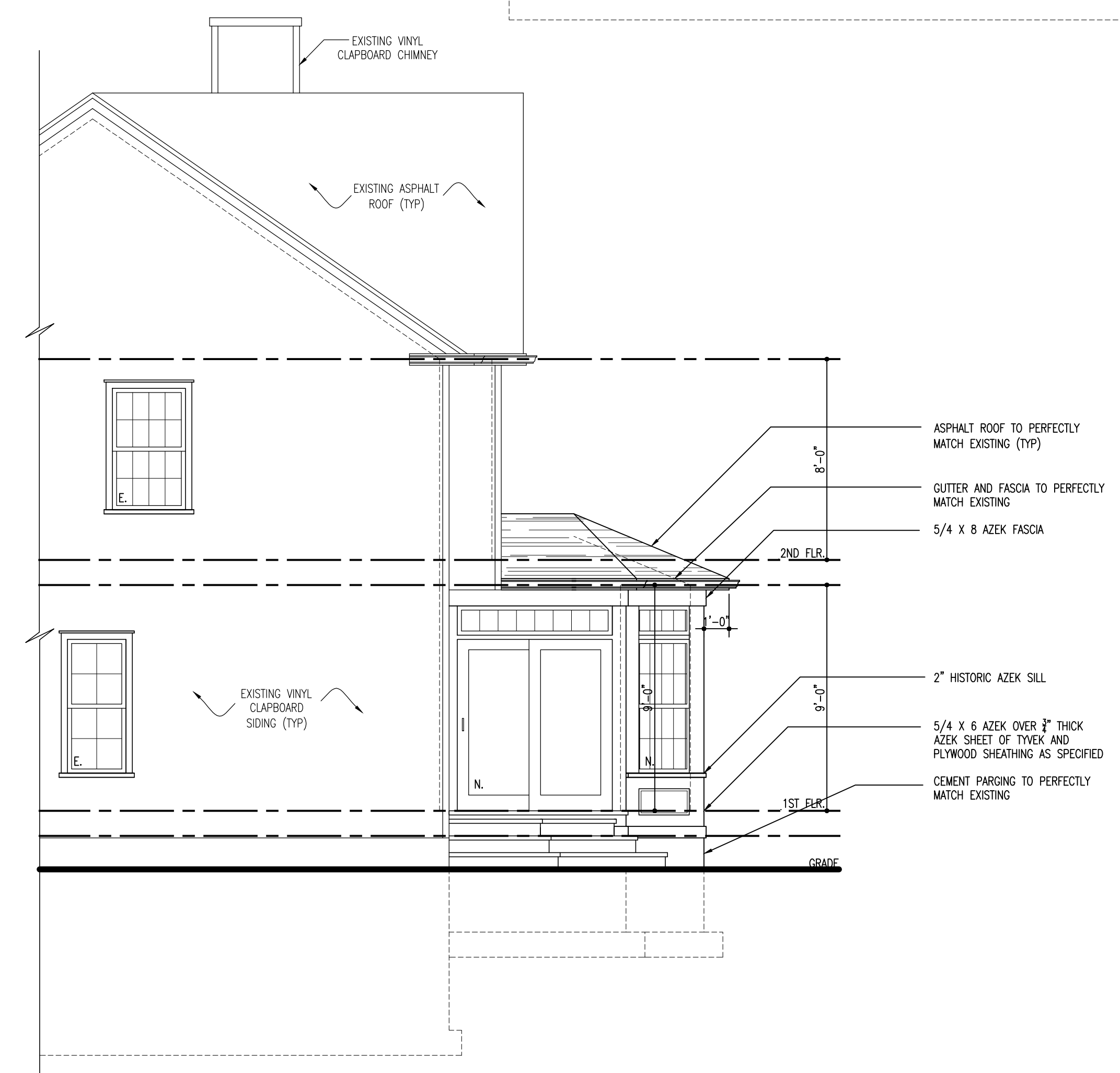
DRAWING NUMBER

BOA-3

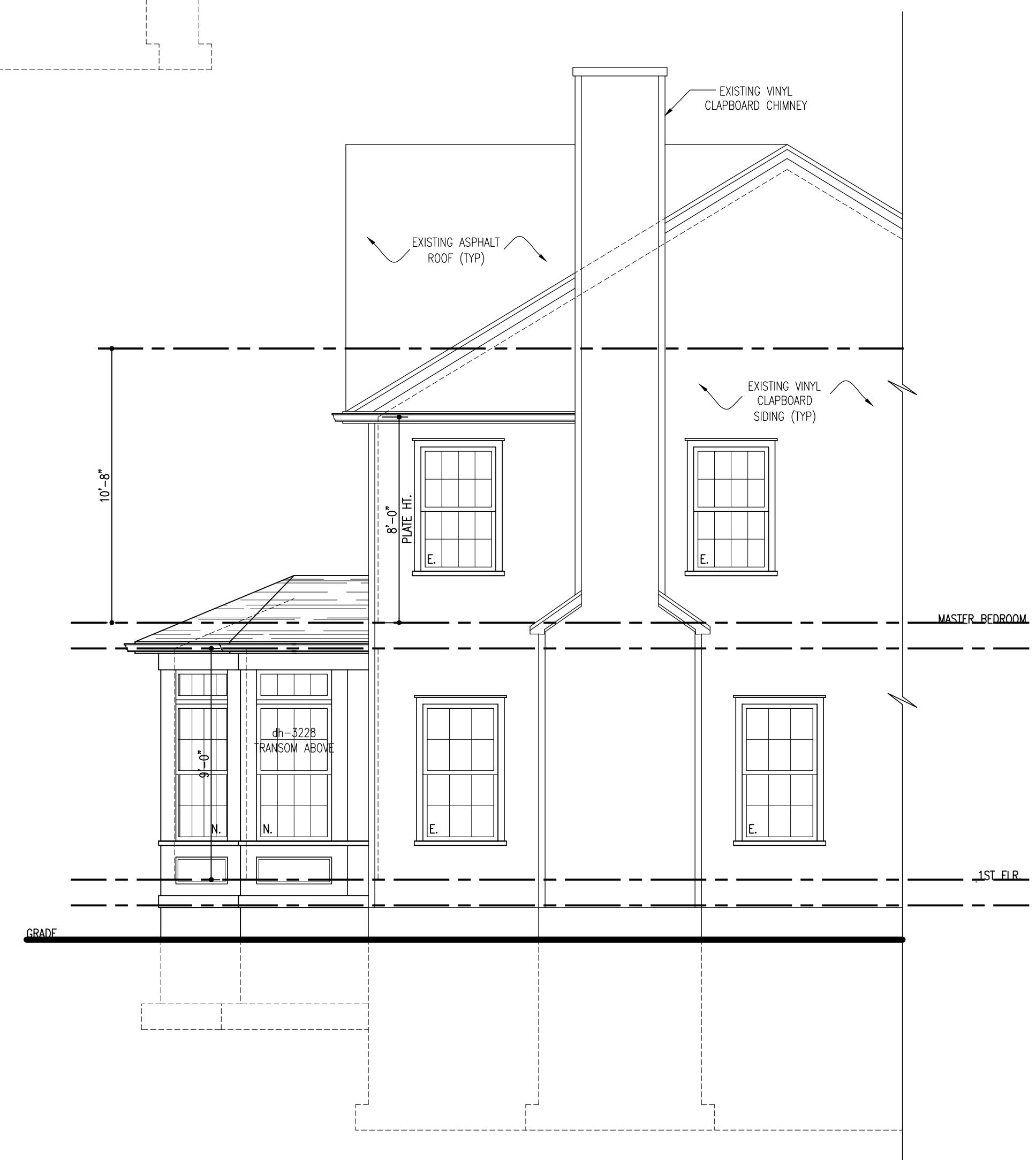
PROJECT NO 20048 SHEET 3 OF 3
MESSINA



REAR ELEVATION



PARTIAL RIGHT SIDE ELEVATION



PARTIAL LEFT SIDE ELEVATION