



**BOLLARD - LEVEL 1**

N.T.S.



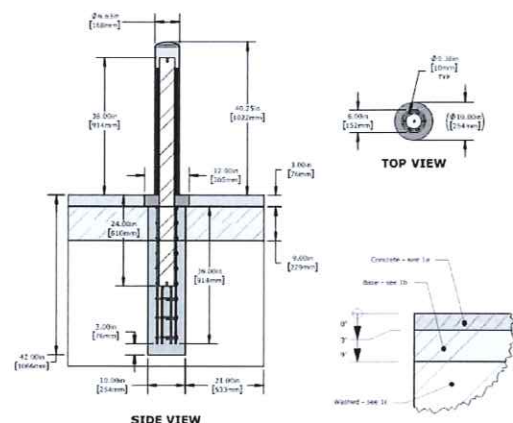
**BOLLARD - LEVEL 2**

N.T.S.

MAINTAIN 60" CLEAR IN FRONT OF DOORS FOR ADA ACCESSIBILITY

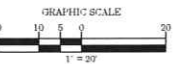
INSTALL 5 NEW BOLLARDS (6" DIAMETER)

EVENLY SPACED: 3'-8" C-C (TYP.)  
DISTANCE FROM BLDG: +/- 4'-0"



**CRASHCORE - BOLLARD DETAIL**

N.T.S.



**LANDSCAPE PROTECTION/SEQUENCE OF CONSTRUCTION :**

1. EVALUATION OF SPACING BETWEEN LANDSCAPE ROWS TO MINIMIZE DISTURBANCE\*
2. INSTALL BOLLARDS IN CLEAR SPACE BETWEEN LANDSCAPING AND SIDEWALK. (SEE PHOTOS 1 AND 2).
3. PRUNE AND/OR TRIM LANDSCAPING AS NEEDED.

\* SHOULD EXISTING CONDITIONS BE FOUND TO NOT MATCH DESIRED CONDITIONS, OR IN THE EVENT LANDSCAPING IS AFFECTED, A LOW GROWTH SHRUB SIMILAR IN NATURE TO WHAT CURRENTLY EXISTS SHALL BE PLANTED.



PHOTO 1 (FRONT BUILDING VIEW)



PHOTO 2 (SIDE BUILDING VIEW)

INSTALL 6 NEW BOLLARDS (6" DIAMETER)

EVENLY SPACED: 6'-5" C-C (TYP.)  
DISTANCE FROM BLDG: +/- 4'-0"



MAINTAIN 36" WALKWAY AT THE FACE OF BOLLARDS TO THE EDGE OF THE SIDEWALK

**NOTES:**

1. REDUCE DISTURBANCE AS MUCH AS PRACTICAL DURING BOLLARD INSTALLATION.
2. CARE SHALL BE TAKEN DURING CONSTRUCTION TO PRESERVE EXISTING SHRUBS AS MUCH AS PRACTICAL. EXISTING SHRUBS SHALL BE REPLACED OR RELOCATED IF IMPACTED BY BOLLARD INSTALLATION. IN THE EVENT LANDSCAPING IS AFFECTED, A LOW-GROWTH SHRUB THAT IS SIMILAR IN NATURE TO WHAT CURRENTLY EXISTS SHALL BE PLANTED.
3. THE GENERAL CONTRACTOR SHALL FIELD VERIFY THE EXACT LOCATION OF ALL PUBLIC AND PRIVATE UTILITIES, INCLUDING IRRIGATION, SPECIFIC TO THIS PROJECT PRIOR TO THE START OF ANY DEMOLITION OR CONSTRUCTION. SHOULD ANY UTILITY REQUIRE RELOCATION, CONTRACTOR SHALL COORDINATE WITH THE OWNER AND THE ARCHITECT/ENGINEER.
4. CONTRACTOR TO INSTALL BOLLARDS TO MAINTAIN ALL CLEARANCES AND SLOPES AS REQUIRED BY ADAAG 2010 AND ICC/ANSI A-117.1 2009 AND ANY LOCAL CODES.



TD BANK  
WYCKOFF  
GODWIN  
BOLLARD INSTALLATION  
292 GODWIN AVE  
WYCKOFF, NJ 07481



CORE STATES, INC.  
INCORPORATED  
ENGINEERING  
CERTIFICATE OF AUTHORIZATION  
No. JAC045714801  
46 E Main St  
Somerville, NJ 08876  
908.462.9700  
www.corestates.com

SEAL

KEVIN G. FURAO, P.E.  
NJ LICENSE #24GE05570400

ISSUE	DATE	DESCRIPTION
1	05/03/21	PER UPGRADED BOLLARD

PROJECT INFORMATION BLOCK

JOB #	TCE-0610
DATE	05-06-2021
SCALE	AS NOTED
DRAWN BY:	MF
CHECKED BY:	KF

SHEET TITLE  
**SITE PLAN**

SHEET NUMBER  
**A-101**

PLANNING BOARD CHAIRMAN	DATE
MUNICIPAL ENGINEER	DATE
PLANNING BOARD SECRETARY	DATE

**11 TOTAL - NEW BOLLARDS INSTALLED**